

**AGENDA**  
**\*Revised 10-09-2015**  
**JEFFERSON COUNTY BOARD MEETING**  
**October 13, 2015      7:00 p.m.**  
**Jefferson County Courthouse**  
**311 S. Center Avenue, Room 205**  
**Jefferson, WI 53549**

1. **CALL TO ORDER**
  2. **ROLL CALL BY COUNTY CLERK**
  3. **PLEDGE OF ALLEGIANCE**
  4. **CERTIFICATION OF COMPLIANCE WITH OPEN MEETING LAW**
  5. **APPROVAL OF THE AGENDA**
  6. **APPROVAL OF SEPTEMBER 8, 2015 MEETING MINUTES**
  7. **COMMUNICATIONS**
    - a. Treasurer's Monthly Report (Addendum)
    - b. Appointment by County Board Chair - Gregg Patrick to fill the unexpired term for County Board Supervisor District 26 ending April 19, 2016 (Page 1)
    - c. Administration of Oath of Office to County Board Supervisor Gregg Patrick
    - d. Appointment by County Board Chair –Gregg Patrick to the Solid Waste/Air Quality and Land and Water Conservation Committees to fill an unexpired terms ending April 19, 2016 (Page 2)
    - e. Appointment by County Board Chair – Don Reese to the Highway Committee to fill an unexpired term ending April 19, 2016 (Page 3)
    - f. Retirement Recognitions
    - g. Recognition – Recognition – Carlton Zentner (Addendum)
    - h. Resolution – In Memoriam of Martin “Marty” Powers (Page 4)
    - i. Letters dated September 14, 2015 from Senator Janis Ringhand (Page 5-6)
    - j. 2016 Classification of Authorized Personnel & Position Changes (Page 7-13)
    - k. Report – Apportionment of County Levy / Net New Construction (Page 14-17)
    - l. Zoning Committee – Notice of Public Hearing, October 15, 2015 (Page 18-19)
  8. **PUBLIC COMMENT** (Agenda Items)
  9. **SPECIAL ORDER OF BUSINESS**
    - a. Presentation of the 2016 Recommended Budget
- COMMITTEE REPORTS / RESOLUTIONS / ORDINANCES**
10. **ADMINISTRATION AND RULES COMMITTEE**
    - a. Resolution – Supporting more severe criminal penalties for battery committed against child welfare and juvenile case workers (Page 20)
  11. **BOARD OF HEALTH**
    - a. Resolution – Support funding of comprehensive, sustainable, effective and evidence based communicable disease control and prevention (Page 21-22)
  12. **FARMLAND CONSERVATION EASEMENT COMMISSION**
    - a. Resolution 2015-43 – Recommending future allocation of funds to the Farmland Conservation Easement Commission for the Purchase of Agricultural Conservation Easements (Page 23-24)
    - b. Resolution 2015-42 – Institute a new Farmland Conservation funding method (Page 25-26)

13. FINANCE COMMITTEE
  - a. Resolution – Awarding Refuse Services Contract (Page 27)
  - b. Resolution – Disallowing the claims of Perry Conkle, Krista Beaudry, Laura Koplinski, Dawn Boley and Annette Awater (Page 28)
14. HUMAN RESOURCES COMMITTEE
  - a. Ordinance – Amend Personnel Ordinance HR0461, Military Leave procedure, to provide employees military leave without loss of pay for up to 10 days (Page 29-31)
  - b. Ordinance – Amend Personnel Ordinance HR0480, Smoking Policy, to conform with the Jefferson County Smoke Free Air Act (Page 32-33)
15. LAW ENFORCEMENT AND EMERGENCY MANAGEMENT
  - a. Resolution – Implement Integrated Public Alert and Warning System (IPASW) (Page 34)
  - b. Resolution – Establishing Medical Examiner Autopsy Transport Fees and Cremation Fees (Page 35-36)
16. PARKS COMMITTEE
  - a. Resolution – Approval of Implementation Plan for the Rock River Public Access Site – Cappie’s Landing (Page 37-47)
  - b. Resolution – Approve County Conservation Aids Grant Application (Page 48)
  - c. Resolution – Monetary donation of \$42,000 to assist in the purchase of a parcel of property to expand the Garman Nature Preserve in Waterloo (Page 49-50)
  - d. Resolution – Accepting bid for construction of the Dorothy Carnes Park East Trailhead Parking Lot (Page 51)
17. PLANNING & ZONING COMMITTEE
  - a. Report – Approval of Petitions (Page 52)
  - b. Ordinance – Amend Zoning Ordinance (Page 53-55)
18. APPOINTMENTS BY COUNTY ADMINISTRATOR
  - a. Jim Mode, Jefferson, WI, to the Human Services Board for a three-year term ending November 1, 2018 (Page 56)
  - b. James Schultz, Watertown, WI, to the Human Services Board for a three-year term ending November 1, 2018 (56)
  - c. Leigh Froelich, Sullivan, WI, to the Jefferson County Library Board for a three-year term ending December 31, 2018 (Page 56)
  - d. Nancy Lust, Cambridge, WI, to the Jefferson County Library Board for a three-year term ending December 31, 2018 (Page 56)
19. INFRASTRUCTURE COMMITTEE
  - a. \*Resolution - Accepting bid for backup generator for Lueder Haus (addendum)
20. PUBLIC COMMENT (General)
21. ANNOUNCEMENTS
22. ADJOURN

**NEXT COUNTY BOARD MEETINGS  
OCTOBER 27, 2015 – 7:00 P.M. - ROOM 205  
PUBLIC HEARING – 2016 BUDGET**

**NOVEMBER 10, 2015 – 7:00 P.M. – ROOM 205**



## JEFFERSON COUNTY BOARD

Jefferson County Courthouse  
311 S. Center Avenue, Room 204 A  
Jefferson, WI 53549  
Telephone (920) 674-8607


**JIM SCHROEDER**  
County Board Chair

### Board Rule 3.06(1) Appointment to Boards, Commissions, Committees and Other Bodies

I, Jim Schroeder, Chairman of the County Board of Supervisors, Jefferson County, Wisconsin, as the appointing authority, hereby appoint Gregg Patrick to fill an unexpired term for County Board Supervisor - District 26 ending April 19, 2016.

Effective September 8, 2015.

Dated this 8th day of September, 2015.

  
\_\_\_\_\_  
Jim Schroeder



## JEFFERSON COUNTY BOARD

Jefferson County Courthouse  
311 S. Center Avenue, Room 204 A  
Jefferson, WI 53549  
Telephone (920) 674-8607


**JIM SCHROEDER**  
County Board Chair

### Board Rule 3.05(1)\* Appointment to Standing Committee

I, Jim Schroeder, Chairman of the County Board of Supervisors, Jefferson County, Wisconsin, as the appointing authority for standing committees, hereby appoint Gregg Patrick to the Solid Waste/Air Quality Committee and Land and Water Conservation Committee to fill an unexpired term ending April 19, 2016.

Effective September 8, 2015.

Dated this 8th day of September, 2015.

  
\_\_\_\_\_  
Jim Schroeder



## JEFFERSON COUNTY BOARD

Jefferson County Courthouse  
311 S. Center Avenue, Room 204 A  
Jefferson, WI 53549  
Telephone (920) 674-8607


JIM SCHROEDER  
County Board Chair

### Board Rule 3.05(1)\* Appointment to Standing Committee

I, Jim Schroeder, Chairman of the County Board of Supervisors, Jefferson County, Wisconsin, as the appointing authority for standing committees, hereby appoint Donald Reese to the Highway Committee to fill an unexpired term ending April 19, 2016.

Effective September 8, 2015.

Dated this 8th day of September, 2015.

  
\_\_\_\_\_  
Jim Schroeder

**RESOLUTION NO. 2015-\_\_\_\_\_**

**IN MEMORIAM – Martin “Marty” H. Powers**

WHEREAS, Marty Powers was born on April 30, 1935, and died on August 13, 2015, and

WHEREAS, Marty Powers had served on the Jefferson County Human Services Board as a citizen representative from January 1999 to November 2011, and

WHEREAS, as a Human Services Board member, Marty Powers provided valuable input despite personal health challenges.

NOW, THEREFORE, BE IT RESOLVED that the Jefferson County Board of Supervisors, assembled in regular session this 13<sup>th</sup> day of October 2015, extends its sincere sympathy to Marty's family with this acknowledgement of his dedication to the citizens of the County of Jefferson.

Ayes \_\_\_\_\_ Noes \_\_\_\_\_ Abstain \_\_\_\_\_ Absent \_\_\_\_\_ Vacant \_\_\_\_\_

Requested by  
Human Services Board

10-13-15

Barbara A. Frank: 09-29-15

REVIEWED: Administrator bp; Corp. Counsel DBW, Finance Director bu



## STATE SENATOR JANIS RINGHAND

September 14, 2015

Barbara Frank  
Jefferson County Courthouse  
311 S. Center Ave. Rm. 109  
Jefferson, WI 53549

Dear Barbara,

Thank you for sending my office a copy of the Resolution which supports the funding of pay progression for Assistant District Attorneys and creating funding for additional Assistant District Attorney positions. I appreciate hearing from you and share your concerns.

I support both tenants of your resolution. In 2012, an analysis by the Wisconsin State Prosecutor's office revealed that there is a statewide shortage of District Attorney's and 215 additional prosecutors are needed to close the gap.

In the last State Budget, eight counties were provided funding to turn a part-time ADA into a full time ADA. However, no other changes were made to address the staffing shortage

Please feel free to contact me if I can be of further assistance on this or any other legislative matter. I can be reached via phone at 1-800-334-1469 or email at [sen.ringhand@legis.wi.gov](mailto:sen.ringhand@legis.wi.gov).

Sincerely,

Janis Ringhand  
State Senator  
15<sup>th</sup> Senate District

JR/jm

RECEIVED

SEP 23 2015

JEFFERSON CO. CLERK, WI  
JEFFERSON COUNTY FINANCE



STATE SENATOR JANIS RINGHAND

September 14, 2015

Barbara Frank  
Jefferson County Clerk  
311 S Center Ave, Room 109  
Jefferson, WI 53549

Dear Barbara,

Thank you for taking the time to let me know your concerns about the Republican plan to override county shoreland zoning ordinances. This is just another example of the top down control that Governor Walker and legislative Republicans are exerting over local government and people throughout the state.

As a former mayor and alderwoman, I believe that decisions on zoning and local matters should be made the local officials who are elected by the people and have vested interest in their community.

This top down proposal to strip county governments of their zoning authority was introduced in an 11<sup>th</sup> hour motion with no notice given to the Democrats on the Joint Finance Committee. The Republicans knew that this type of egregious interference in local zoning would not pass as a separate bill so they waited until the middle of the night to slip it into the budget at the last minute.

Democrats attempted to remove the zoning provision from the budget, but our efforts were rejected by the Republicans on a party-line vote. Governor Walker refused to veto this provision.

This is just one of many bad ideas in the Republican budget. The extent of the special interest giveaways at the expense of education, health services, local control and the environment were just too great for me to support the budget.

I have signed on as a co-author of legislation to repeal the shoreland zoning changes. Our attempt to remove this proposal from the budget was rejected on a party-line vote so unless there are a few Republicans who experience a change of heart, the zoning changes will remain in place for the foreseeable future.

Thank you again for letting me know your concerns. If you have any questions, or would like additional information, please contact me at any time.

Sincerely,

  
Janis Ringhand  
State Senator  
15<sup>th</sup> District

JR/js

RECEIVED

SEP 23 2015

JEFFERSON CO. CLERK, WI

15th Senate District, P.O. Box 7882, Madison, WI 53707-7882 • <http://ringhand.senate.wi.gov>  
Phone: (608) 266-2253 • Fax: (608) 282-3555 • [Sen.Ringhand@legis.wi.gov](mailto:Sen.Ringhand@legis.wi.gov)



# Classification of Authorized Positions

## ADMINISTRATION (3 FT)

- 1 County Administrator
- 1 Administrative Secretary
- \*\*\* 1 Management Analyst

## CENTRAL SERVICES (7 FT)

- 1 Maintenance Director
- 1 Building Maintenance Worker II
- 1 Building Maintenance Worker I
- 3 Custodian (1 FT funded PT)
- 1 Central Services Worker

## CHILD SUPPORT AGENCY (12 FT, 1 student)

- 1 Child Support Director
- 6 Enforcement Specialist I/II
- 2 Legal Assistant
- 1 Financial Support Specialist
- 1 Administrative Assistant II
- 1 Co-op Student
- \*\*\*1 Financial Support Specialist

NOTE: 2 Assistant Corporation Counsel budgeted in CSA, but authorized in Corporation Counsel budget

## CLERK of COURTS (29 FT, 2 PT, 8 SE)

- 1 Clerk of Circuit Court,
- 1 Chief Deputy Court Clerk
- 1 Lead Deputy Court Clerk
- \*\*1 Lead Deputy Clerk
- 3 Deputy Court Clerk III
- 12 Deputy Court Clerk I/II
- \* 2 Deputy Register in Probate/Juvenile Clerk (1FT, 1 PT)
- 1 Register in Probate/Attorney/Commissioner
- 3 Judicial Assistant
- 2 Circuit Court Commissioners
- (1 FT also sm. claims/other circuit court duties)
- \* 1 Child Custody Evaluator
- \* 1 Family Court Mediator
- 1 Legal Secretary
- 1 Administrative Assistant I (FCC) (PT)
- 4 Judge (SE)
- 4 Circuit Court Reporter (SE)
- \*\*\*\*Eliminate 1 Deputy Register in Probate/Court Clk II
- \*\*\*\*Eliminate 1 Deputy Court Clerk I/II (PT)
- \*\*\*\*Eliminate 2 Mediator/Custody & Placement Evaluator

NOTE: The Register in Probate appointment was removed from the Clerk of Courts

## CORPORATION COUNSEL (5 FT)

- 1 Corporation Counsel
- 3 Assistant Corporation Counsel
- 1 Paralegal II

## COUNTY BOARD (30 PT)

- 30 County Board of Supervisor (PT)

## COUNTY CLERK (3 FT, OPTs)

- 1 County Clerk
- 1 Chief Deputy County Clerk/Election Software Programmer
- 1 Administrative Ass't II/ Deputy Elections Clerk (Funded PT)
- Election Pool Assistance (OPT)

## DISTRICT ATTORNEY (11 FT, 5.3 SE)

- 1 District Attorney (SE)
- 4.3 Assistant District Attorney (SE)
- 1 Office Manager
- 5 Legal Secretary
- 1 Victim Witness Coordinator
- 1 First Offender Program Director
- 1 Justice Computer Specialist
- 1 Paralegal II
- \*\*\* 1 Legal Secretary

## ECONOMIC DEVELOPMENT (1 FT, 1 PT)

- 1 Economic Development Director
- 1 Program Assistant (PT)

## EMERGENCY MANAGEMENT (1.6 FT)

- 1 Emergency Management Director
- .6 Program Assistant (Shared FT with Sheriff)

## FAIR PARK (5 FT, 3 OPT, 4 Seasonal, Pool laborers, 15-20 Fair Week staff)

- 1 Fair Park Director
- 1 Fair Park Supervisor
- 2 Marketing/Administrative Assistant II
- 1 Office Assistant (Seasonal)
- 1 Maintenance Worker II
- 1 Laborer (Seasonal)
- 3 Grounds Worker (OPT, 1000 hours)
- 2 On-site Caretaker (6 mo.)
- Fair Time Staff (Approx. 15-20 positions)
- Occasional Pool of laborers, as needed

## FINANCE DEPARTMENT (4FT, 1PT)

- 1 Finance Director
- 1 Assistant Finance Director
- 1 Accounting Specialist II (PT)
- 2 Accounting Specialist I

## HEALTH DEPARTMENT (14 FT, 5PT, OPTs)

- 1 Director/Health Officer
- 1 Public Health Program Manager
- 8 Public Health Nurse (6 FT, 2 PT)
- 1 Licensed Practical Nurse - Clinic
- 1 WIC Project Director Supervisor
- 2 Administrative Assistant II
- 1 Accounting Specialist II
- 2 Licensed Practical Nurse – Jail (1FT and 1 PT)
- 1 WIC Registered Dietetic Technician (PT)

\* 1 Licensed Practical Nurse – Public Health/Jail (PT)  
Occasional Pool of RN's, Public Health Nurses, Jail Nurse,  
Public Health Technicians and WIC Peer Counselors, as  
needed

#### **HIGHWAY (57 FT, pool of seasonal workers)**

1 Highway Commissioner  
1 Operations Manager  
1 Fleet Manager  
1 Accounting Manager  
1 Patrol Superintendent  
\*\*2 Construction Superintendent  
2 Accounting Specialist I  
1 Bridge Crew Foreman  
1 Highway Foreman  
1 Grade Crew Foreman  
1 Sign Foreman  
4 Equipment Mechanic II  
1 Equipment Parts Person  
1 Welder Fabricator  
30 Highway Worker  
7 Equipment Operator  
1 GIS/Engineering Technician  
Seasonal Positions (2,800 hrs)

#### **HUMAN RESOURCES (4.5 FT)**

1 Human Resources Director  
1 Benefits Administrator  
1 Human Resources Specialist  
.5 Safety Coordinator  
(shared FT with Walworth County)  
\*\*\*1 Human Resources Coordinator

#### **HUMAN SERVICES (157 FT, 14 PT, pool)**

##### ADMINISTRATIVE SERVICES DIVISION

1 Director of Human Services  
1 Administrative Services Manager  
1 Office Manager  
1 Maintenance Supervisor  
2 Accounting Specialist II  
\*\*2 Accountant I  
1 Accountant II  
1 Advanced Accountant  
2 Administrative Assistant II  
1 Lead Custodian  
2 Custodian (PT)  
1 IT Specialist/Compliance Officer  
1 Protective Payee  
1 Building Maintenance Worker I  
\*\*1 Building Maintenance Worker II  
3 Administrative Assistant I  
1 Medical Office Assistant  
\*\*1 Financial Intake Worker

##### ADRC AND AGING SERVICES DIVISION

1 Aging and Disability Resources Division Manager  
1 ADRC Supervisor  
2 Elder Benefits Specialist (1FT, 1PT)

2 Disability Benefit Specialist (1FT, 1PT)  
1 Home Delivered Meal Assessor (PT)  
5 Nutrition Site Manager (PT)  
1 Nutrition Program Coordinator  
1 ADRC Paraprofessional  
1 Transportation Coordinator/Van Driver  
\*\* Van Driver (Pool)  
2 Adult Protective Services Case Manager  
1 Aging & Disability Resource Specialist II  
4 Aging & Disability Resource Specialist I (3 FT, 1 PT)  
1 Dementia Care Specialist

##### BEHAVIORAL HEALTH DIVISION

1 Mental Health/AODA Supervisor  
1 Community Support Program Supervisor  
1 Comprehensive Community Services Supervisor  
1 Crisis Services Supervisor  
8 Behavioral Health Specialist  
\*\* 1 Human Services Professional I/II  
6 Comprehensive Community Services Facilitator  
\* 2 Comprehensive Community Services Facilitator  
1 Group Home Supervisor  
1 Mental Health Technician  
\*\* 1 Community Outreach Worker – Youth  
6 Group Home Worker (4 FT, 2 PT and pool)  
1 Administrative Assistant II  
\*\* 1 Administrative Assistant II/Mental Hlth Technician  
1 Jail Case Manager/Behavioral Health Specialist  
11 Community Support Program Professional I/II  
1 Alternate Care Coordinator  
1 Human Services Professional I/Counselor/  
AODA Assessor  
1 Financial Assistance Worker  
5 Intake/On-Call Worker  
1 Community Outreach Worker/Group Home Worker  
1 Project Coordinator  
1 Comprehensive Community Services Facilitator/  
Transition Specialist  
\* 1 Comprehensive Community Services Facilitator/  
Transition Specialist  
\*\*\*\* Eliminate 1 Youth Community Outreach Worker  
(PT)

##### ECONOMIC SUPPORT DIVISION

1 Economic Support Division Manager  
1 Economic Support Supervisor  
14 Economic Support Specialist I/II  
4 Financial Planner  
1 Administrative Assistant I  
\*\* 1 Administrative Assistant II  
1 Community Outreach Worker/Interpreter

##### CHILD AND FAMILY RESOURCES DIVISION

\*\* 1 Child and Family Resources Division  
Manager/Deputy Director  
1 Child Protective Services Supervisor  
1 Intake Supervisor  
1 Birth-to-Three/Preschool Supervisor

- 1 Wraparound/Youth Services Supervisor
- 1 Juvenile Justice Supervisor
- 3 Community Services Wraparound Coordinator
- 4 Community Outreach Worker (3 FT, 1 PT)
- 1 Family Development Worker
- 1 Family Development Worker
- 8 Child Protective Services Ongoing Prof I
- 7 Intake/On-Call Worker
- 2 Early Intervention Service Coordinator
- 3 Early Intervention Teacher
- 1 Foster Care Coordinator
- 2 Personal Assistance Case Manager/  
Family Support Coordinator
- 1 Human Services Professional I/II
- 6 Juvenile Justice Workers

\*\*\*\*Eliminate Family Development Worker (PT)

#### **LAND & WATER CONSERVATION (6FT, Intern)**

- 1 Land & Water Conservationist Director
- 2 Resource Conservationist
- 1 Water Resource Management Specialist
- 1 Administrative Specialist I
- 1 GIS & Land Use Technician

\*\*\* 1 Student Intern

#### **LAND INFORMATION OFFICE (4.4 FT, Intern)**

- 1 Land Information Director
- 1 Surveyor
- 1 Cartographer
- 1 Real Property Lister
- .4 Administrative Specialist I/Deputy Treasurer  
(FT shared with Treasurer)

\*\*\* Student Intern

#### **MANAGEMENT INFORMATION SYSTEMS (MIS) (10 FT, 1PT, 1 Student)**

- 1 Systems and Applications Manager
- 1 Information Technology Manager

\*\*\*1 Systems Analyst

\*/\*\*\* Senior Systems Analyst

- 2 Programmer Analyst
- 1 Senior Systems Analyst
- 1 Senior Microcomputer Specialist
- 1 Microcomputer Specialist
- 1 Microcomputer Technician
- 1 Central Duplicating Clerk (PT)
- Student Hardware Technician

\*\*\*\*Eliminate 1 Senior Systems Analyst (PT)

#### **MEDICAL EXAMINER OFFICE (1 FT, 1 PT, OPTs)**

\*\*\*1 Medical Examiner (funded PT)

- 1 Chief Investigator (PT)

Pool of Occasional part-time Investigators  
Examiners, as needed

#### **PARKS DEPARTMENT (5 FT, 5 PT, 7 seasonal/OPT)**

- 1 Parks Director
- 1 Parks Supervisor
- 1 Parks Construction & Maintenance Lead Worker

- 1 Building & Grounds Maintenance Worker
- 3 Parks Maintenance Worker (PT)
- 1 Program Assistant
- 1 Administrative Assistant II (PT)
- 2 Seasonal Worker
- 4 Grounds Worker (OPT)
- \*\*\*1 Volunteer Coordinator (PT)
- 1 Dog Park Attendant (OPT)

#### **REGISTER OF DEEDS (5 FT)**

- 1 Register of Deeds
- 1 Chief Deputy Register of Deeds
- 1 Deputy Register of Deeds

\*\*\*1 Administrative Assistant I (Funded PT)

\*\*\*1 Deputy Register of Deeds I

#### **SHERIFF (125.4 FT, 5 PT, 1 LTE, 2 OPT, pool positions)**

##### ADMINISTRATIVE/DETECTIVE DIVISION

- 1 Sheriff
- 1 Chief Deputy
- \*\*\*1 Undersheriff (OPT)
- 1 Captain
- 1 Administrative Specialist II
- 1 Accounting Specialist I
- 2 Sergeant
- 8 Detective

5.4 Administrative Assistant II (1 shared FT with  
Emergency Management)

\*\*\*1 Grant Funded LTE

##### PATROL DIVISION

- 1 Captain
- 6 Sergeant
- 34 Deputy
- 1 Administrative Assistant II
- 1 Mechanic

##### SUPPORT SERVICES

- 1 Sergeant
- 5 Deputy
- \*\*\*4 Deputy
- 1 Administrative Assistant II
- Pool of part-time deputies, as needed

##### COMMUNICATION DIVISION

- 9 Communication Operator I/II
- 1 Communication Supervisor
- Pool of part-time Communication Operators,  
as needed

##### JAIL DIVISION

- 1 Captain
- 6 Sergeant
- 30 Deputy
- \*\*\*1 Accounting Assistant I (funded PT)
- \*\* 1 Accounting Assistant II
- 1 Jail Food Service Supervisor
- 5 Cook (1 FT, 3 PT, 1 OPT)
- 2 Custodian (PT)

## AUTHORIZED POSITION SUMMARY

### **TREASURER (1.6 FT, 1 PT)**

- 1 County Treasurer
- .6 Administrative Specialist I/Deputy Treasurer  
(shared with Land Information Office)
- 1 Assistant Deputy Treasurer (PT)

### **UNIVERSITY EXTENSION (2 FT, 4 SE, 1 intern)**

- 1 Agricultural Agent (SE)
- 1 Family Living Agent (SE)
- 1 Community Development Agent (SE)
- 1 Youth Development Agent (SE)
- 1 4-H Summer Intern
- 2 Administrative Specialist I

### **VETERANS SERVICE (3 FT, Pool)**

- 1 Veterans Service Officer
- 1 Deputy Veteran Services Officer
- \*\*\*1 Veteran Benefits Specialist
- 1 Veterans Service Clerk (Pool – 1039 hours)

### **ZONING (8 FT)**

- 1 Planning and Zoning Director
- 1 Zoning/Onsite Waste Systems Technician
- \*\*\*2 Zoning/Onsite Waste Systems Technician
- 1 Onsite Waste Systems Technician
- 1 Solid Waste/Clean Sweep Specialist
- 1 Program Assistant
- 1 Administrative Specialist I

#### **\* New Positions**

#### **\*\* Reclassified/New Job Title Positions**

#### **\*\*\* Unfunded Positions**

#### **\*\*\*\* Eliminated Positions**

**SE = STATE EMPLOYEE**

2015	2016	Change	Type
482.5	485.5	3.0	Full Time Position
39	36	(3.0)	Part Time Position
30	30	0.0	County Board Supervisors (PT)
22	24	2.0	Seasonal/Occasional/ LTE Position
573.5	575.5	2.0	Total County Positions
17.3	17.3	0.0	State Positions
590.8	592.8	2.0	Total Positions
18.0	22.0	(4.0)	Unfunded Positions
572.8	570.8	(2.0)	Total funded Positions

#### **Note:**

Since the 2015 budget was adopted, County Board approved eliminating 3.0 Part Time positions and creating 2 Pool positions.

# POSITION CHANGES

Department	Position Title	Action	Requested by Department Head	Recommended by County Administrator	Finance Committee Recommended	Adopted by County Board	Comments
Child Support	Financial Support Specialist (1.0 FTE)	Unfund	Yes	Yes	Yes		Total Savings: \$73,550.45. Net Tax Levy savings: \$24,516.82
Clerk of Courts	Deputy Register in Probate/Court Clerk II (1.0 FTE)	Eliminate	No	Yes	Yes		Elimination of the full and part-time positions are contingent on creating the full and part-time position. Tax Levy Cost: \$0.00.
	Deputy Court Clerk I/II (.48 FTE)	Eliminate	No	Yes	Yes		
	2 Deputy Register in Probate/Juvenile Clerk (1.0 FTE and .48FTE)	Create	No	Yes	Yes		
	2 Mediator/Custody & Placement Evaluators (2.0 FTE)	Eliminate	Yes	Yes	Yes		Elimination of 2 Full time Mediator/Custody Evaluators are contingent on Creation of 1 FT Child Custody Evaluator and 1 FCC Mediator. Change was effected December, 2014 per Judges request. Tax Levy Cost: \$0.00.
	Child Custody Evaluator (1.0 FTE)	Create	Yes	Yes	Yes		
District Attorney's Office	Family Court Mediator (1.0 FTE)	Create	Yes	Yes	Yes		
	Legal Secretary (1.0 FTE)	Unfund	No	Yes	Yes		Position is currently vacant. Tax Levy Savings: \$60,463.91.
Health Department	Licensed Practical Nurse - Public Health/Jail (.8 FTE)	Create	Yes	Yes	Yes		Creation of position is contingent on reducing or unfunding occasional nursing pool hours in the jail. Tax Levy Cost: \$3,687 and Non Tax Levy Cost: \$43,655.
	Jail nursing pool hours (.20 FTE)	Unfund	Yes	Yes	Yes		

Department	Position Title	Action	Requested by Department Head	Recommended by County Administrator	Finance Committee Recommended	Adopted by County Board	Comments
Human Services	Comprehensive Community Services Facilitator (1.0 FTE)	Create	Yes	Yes	Yes		This new position is fully funded by federal and state Medicaid money. Total Cost: \$82,221. Tax Levy Cost: \$0.00.
	Comprehensive Community Services Facilitator (1.0 FTE)	Create	Yes	Yes	Yes		This new position is fully funded by federal and state Medicaid money. Total Cost: \$82,221. Tax Levy Cost: \$0.00.
	Comprehensive Community Services Facilitator/Transition Specialist (1.0 FTE)	Create	Yes	Yes	Yes		This new position is fully funded by federal and state Medicaid money. Total Cost: \$82,221. Tax Levy Cost: \$0.00.
	Youth Community Outreach Worker (.48 FTE)	Eliminate	Yes	Yes	Yes		Position is currently vacant and duties were reassigned to another full-time Community Outreach Worker. Total Levy Cost: \$0.00.
	Family Development Worker (.8 FTE)	Eliminate	Yes	Yes	Yes		Elimination of the PT Family Development Worker is contingent on creation of the FT position. Both positions are funded 40% with Children & Families Community Aids and 60% with tax levy. Total increase in cost: \$9351. Total Tax Levy Cost: \$5611.
	Family Development Worker (1.0 FTE)	Create	Yes	Yes	Yes		
Management Information Systems	Senior Systems Analyst (.5 FTE)	Eliminate	Yes	Yes	Yes		Tax-levy Savings: \$35,881.
	Senior Systems Analyst (1.0 FTE)	Create	Yes	Yes	Yes		The creation and unfunding of a Sr. Systems Analyst position will allow flexibility in recruitment, if needed. Tax levy cost: \$0.00.
	Senior Systems Analyst (1.0 FTE)	Unfund	Yes	Yes	Yes		



Department	Position Title	Action	Requested by Department Head	Recommended by County Administrator	Finance Committee Recommended	Adopted by County Board	Comments
Register of Deeds	Administrative Assistant I (1.0 FTE)	Unfund, Partially	No	Yes	Yes		Tax-levy savings: \$26,504.

Total FTEs Created	7.8	9.28	9.28
Total FTEs Eliminated	-3.78	-5.26	-5.26
Sub-Total (in FTEs)	4.02	4.02	4.02
Total FTEs Unfunded	-2.2	-3.7	-3.7
Total FTEs Funded	0	0	0
Net Change (in FTEs)	1.82	0.32	0.32
General Tax-levy change in overall budget	(\$51,100)	(\$138,068)	(\$138,068)
Non-County levy change	\$ 43,655.00	\$ 43,655.00	\$ 43,655.00

TID303WI

Report Used for Apportionment of County Levy

Date: 08/11/2015

Page 64 of 188

**JEFFERSON County**

2015 County Apportionment

District	Equalized Value Reduced by TID Value Increment	% to Total
Aztalan	131,877,600	.021349243
Cold Spring	74,307,200	.012029355
Concord	170,160,400	.027546723
Farmington	131,350,600	.021263929
Hebron	98,421,300	.015933110
Ixonia	426,022,700	.068967453
Jefferson	181,086,100	.029315450
Koshkonong	361,841,600	.058577380
Lake Mills	271,114,600	.043889876
Milford	103,519,000	.016758360
Oakland	346,539,300	.056100139
Palmyra	182,016,800	.029466118
Sullivan	179,720,200	.029094328
Sumner	107,762,600	.017445343
Waterloo	87,590,000	.014179665
Watertown	176,370,300	.028552024
<b>Town Total</b>	<b>3,029,700,300</b>	<b>.490468494</b>
Cambridge	5,369,500	.000869251
Johnson Creek	192,551,800	.031171595
Lac La Belle	830,100	.000134382
Palmyra	111,660,800	.018076410
Sullivan	45,021,800	.007288435
<b>Village Total</b>	<b>355,434,000</b>	<b>.057540074</b>
Fort Atkinson	852,762,700	.138051027
Jefferson	461,912,900	.074777602
Lake Mills	464,676,800	.075225041



## JEFFERSON County

## 2015 County Apportionment

**Equalized Value Reduced  
by TID Value Increment**

**% to Total**

Waterloo	191,322,200	.030972539
Watertown	771,115,400	.124833406
Whitewater	50,231,500	.008131817
<b>City Total</b>	2,792,021,500	.451991433
<b>County Total</b>	6,177,155,800	1.0000000000

District	TID Value Increments		Current Value	Increment
	TID #	YEAR		
V • Johnson Creek	002	1994	68,124,400	56,745,600
V • Johnson Creek	003	1995	47,704,300	47,002,900
V • Palmyra	003	2006	8,319,000	7,888,700
C • Fort Atkinson	006	2000	7,448,200	6,312,800
C • Fort Atkinson	007	2000	23,813,700	12,225,800
C • Fort Atkinson	008	2009	31,313,800	2,729,600
C • Jefferson	004	2000	1,089,300	1,089,300
C • Jefferson	005	2001	30,544,400	9,107,100
C • Jefferson	006	2009	6,341,100	6,341,100
C • Jefferson	007	2012	3,308,300	3,308,300
C • Lake Mills	002	1998	27,177,100	15,731,400
C • Lake Mills	003	2006	9,141,400	2,147,600
C • Lake Mills	004	2006	16,148,200	8,300,000
C • Lake Mills	005	2014	5,797,200	*
C • Lake Mills	006	2014	3,166,600	*
C • Waterloo	001	2005	14,001,600	8,040,100
C • Waterloo	002	2011	6,987,200	*
C • Waterloo	003	2012	2,613,800	1,030,700

TID303WI

Report Used for Apportionment of County Levy

Date: 08/11/2015

Page 66 of 188

**JEFFERSON County**

2015 County Apportionment

District	TID #	TID Value Increments		Base Value	Current Value	Increment
		YEAR				
C Waterloo	004	2014		2,320,100	2,146,500	*
C Watertown	003	1991		2,081,800	63,250,100	61,168,300
C Watertown	004	2005		1,047,600	15,820,200	14,772,600
C Watertown	005	2005		39,631,000	59,525,300	19,894,300
C Watertown	006	2005		225,800	2,871,600	2,645,800
C Whitewater	004	1990		968,200	25,965,300	24,997,100
C Whitewater	005	2007		14,500	12,800	*
C Whitewater	008	2007		503,700	511,000	7,300

\* THIS DISTRICT HAS A ZERO OR NEGATIVE INCREMENT, NO INCREMENT SHOWN

## NET NEW CONSTRUCTION 2015

COMUN CODE	MUNICIPALITY	2014 EQUALIZED VALUE	2015 NET NEW CONSTRUCTION	PERCENT
28002	TOWN OF AZTALAN	127,655,100	1,859,700	1.46%
28004	TOWN OF COLD SPRING	72,438,100	750,500	1.04%
28006	TOWN OF CONCORD	169,109,900	286,200	0.17%
28008	TOWN OF FARMINGTON	127,922,500	570,100	0.45%
28010	TOWN OF HEBRON	93,512,900	277,600	0.30%
28012	TOWN OF IXONIA	408,818,400	5,828,800	1.43%
28014	TOWN OF JEFFERSON	171,926,200	662,000	0.39%
28016	TOWN OF KOSHKONONG	347,217,800	1,602,100	0.46%
28018	TOWN OF LAKE MILLS	279,859,800	1,225,700	0.44%
28020	TOWN OF MILFORD	101,409,000	920,500	0.91%
28022	TOWN OF OAKLAND	331,064,000	2,980,100	0.90%
28024	TOWN OF PALMYRA	172,770,600	450,000	0.26%
28026	TOWN OF SULLIVAN	176,814,500	937,700	0.53%
28028	TOWN OF SUMNER	110,081,300	4,400	0.00%
28030	TOWN OF WATERLOO	82,040,500	52,700	0.06%
28032	TOWN OF WATERTOWN	179,068,300	850,000	0.47%
28111	VILLAGE OF CAMBRIDGE *	5,115,900	0	0.00%
28141	VILLAGE OF JOHNSON CREEK	294,236,400	5,643,800	1.92%
28146	VILLAGE OF LAC LA BELLE *	792,100	0	0.00%
28171	VILLAGE OF PALMYRA	114,887,600	212,900	0.19%
28181	VILLAGE OF SULLIVAN	43,946,200	58,300	0.13%
28226	CITY OF FORT ATKINSON	850,864,400	3,292,100	0.39%
28241	CITY OF JEFFERSON	461,734,100	8,421,900	1.82%
28246	CITY OF LAKE MILLS	488,728,900	7,301,100	1.49%
28290	CITY OF WATERLOO	190,225,300	484,200	0.25%
28291	CITY OF WATERTOWN *	868,643,300	6,762,800	0.78%
28292	CITY OF WHITEWATER *	74,520,900	832,400	1.12%
28999	COUNTY OF JEFFERSON	6,345,404,000	52,267,600	0.82%

**NOTICE OF PUBLIC HEARING**  
**JEFFERSON COUNTY PLANNING AND ZONING COMMITTEE**  
*Steve Nass, Chair; Greg David, Vice-Chair; Don Reese, Secretary; Amy Rinard; George Jaeckel*

**SUBJECT:** Map Amendments to the Jefferson County Zoning Ordinance and Requests for Conditional Use Permits  
**DATE:** Thursday, October 15, 2015  
**TIME:** 7:00 p.m. (*Courthouse doors will open at 6:30*)  
**PLACE:** Room 205, Jefferson County Courthouse, 311 S. Center Ave., Jefferson, WI

1. **Call to Order**
2. **Roll Call**
3. **Certification of Compliance with Open Meetings Law Requirements**
4. **Approval of Agenda**
5. **Explanation of Process by Committee Chair**
6. **Public Hearing**

**NOTICE IS HEREBY GIVEN** that the Jefferson County Planning and Zoning Committee will conduct a public hearing at 7 p.m. on Thursday, October 15, 2015, in Room 205 of the Jefferson County Courthouse, Jefferson, Wisconsin. A hearing will be given to anyone interested in the proposals. **PETITIONERS, OR THEIR REPRESENTATIVES, SHALL BE PRESENT.** Matters to be heard are petitions to amend the official zoning map of Jefferson County and applications for conditional use permits. A map of the properties affected may be obtained from the Zoning Department. Individual files are available for viewing between the hours of 8 a.m. and 4:30 p.m., Monday through Friday, excepting holidays. If you have questions regarding these matters, please contact Zoning at 920-674-7131.

**FROM RESIDENTIAL R-1 TO B, BUSINESS**

**R3840A-15 & CU1852-15 – Town of Sullivan:** Rezone PIN 026-0616-1731-053 (0.236 Acre) with conditional use for public and semi-public use to bring the existing fire station property at **W1904 West Main St**, Town of Sullivan, into conformance.

**FROM EXCLUSIVE AGRICULTURAL A-1 TO A-2, AGRICULTURAL AND RURAL BUSINESS**

**R3841A-15 & CU1853-15 – ADL Properties LLC:** Rezone 15.1 acres of PIN 010-0615-3622-000 (40 Acres) with conditional use for a commercial stable at **N2895 Cushman Rd** in the Town of Hebron.

**FROM A-1, EXCLUSIVE AGRICULTURAL TO A-3, AGRICULTURAL/RURAL RESIDENTIAL**

**R3842A-15 – Clayton Morrison:** Create a 1-acre building site from PIN 002-0714-3422-002 (15 Acres) near **W6083 Riess Rd** in the Town of Aztalan.

**R3833A-15 – Jeff & Sandy Leverenz:** Rezone 2 acres around the home at **W346 Concord Center Dr** from PIN 006-0716-1334-000 (22.252 Acres) in the Town of Concord.

**R3834A-15 – Jeff & Sandy Leverenz/Saddle Wish Farm Property:** Create a 2-acre and a 1.5-acre building site as well as a 5-acre farm consolidation lot at **W158 Concord Center Dr**, all from PINs 006-0716-1344-002 (1 Acre) and 006-0716-1343-000 (50.668 Acres) in the Town of Concord.

**R3843A-15 – Scott & Shari Sukow:** Rezone 1.65 acres of PIN 008-0715-1313-000 (32.45 Acres) with the home at **N6349 County Road P** in the Town of Farmington.

**R3844A-15 – Rex & Teresa Nienow/Terrapin Properties LLC:** Create a 1-acre building site from PIN 012-0816-1323-000 (29.601 Acres) in the Town of Ixonia along **Genz Rd**.

**R3845A-15 – Kutz Farms LLC:** Rezone 2.3 acres around the buildings at **N3258 County Road N** and create a new 2-acre building site on **E Pleasant Hill Rd**, both from PIN 014-0614-2522-000 (35 Acres) in the Town of Jefferson.

**R3846A-15 – Roger & Sandra Anderson:** Create a 1.5-acre lot around the home at **W6658 Sunset Ln** and a 2-acre building site on **Grogan Rd**, both from PIN 016-0514-3213-001 (9.259 Acres) in the Town of Koshkonong.

**R3847A-15 – Dan & Toni Zastrow:** Rezone 1.845 acres around the home and shop at **N5307 Mud Lake Rd** on PIN 018-0713-2533-000 (40 Acres) in the Town of Lake Mills.

**R3848A-15 – Judith Gehler:** Create a 3-acre lot at **W7412 Island Rd** in the Town of Waterloo from PIN 030-0813-1213-001 (17.41 Acres).

**R3849A-15 – Denis Sorenson:** Create a 2-acre building site across from **N7927 Newville Rd** in the Town of Waterloo from part of PIN 030-0813-2913-000 (39.5 Acres).

### **FROM A-1, EXCLUSIVE AGRICULTURAL TO A-3, AGRICULTURAL/RURAL RESIDENTIAL AND N, NATURAL RESOURCES**

**R3850A-15 & R3851A-15 – Jerome A Karrels Trust, Shirley Howard Karrels Trust & John & Lisa Schwaller:** Rezone PIN 010-0615-3634-003 (2.031 Acres) owned by the Schwallers and 3 acres of PIN 010-0615-3634-000 (33.089 Acres) owned by the Karrels Trust to create one 5-acre A-3 lot. Rezone an additional 2.1 acres of PIN 010-0615-3634-000 to create a Natural Resource zone adjacent to the A-3 lot. The site is at **W2744 State Road 106** in the Town of Hebron.

### **CONDITIONAL USE PERMIT APPLICATIONS**

**CU1854-15 – Dick Heckel/Robert & Catherine Muchka Property:** Conditional use to allow a business service/new & motor rigging facility and boat storage in a Community zone on **County Road B**. The site is in the Town of Hebron on PIN 006-0716-41-003 (6.003 Acres).

**CU1855-15 – Troy & Terry Letts:** Conditional use to allow an extensive on-site storage structure in a Community zone at **N8246 Pipersville Rd**, Town of Ixonia, on PIN 012-0816-1931-021 (0.907 Acre).

**CU1856-15 – Thomas Reblin:** Conditional use to allow a repair shop/auto storage and restoration at **W1282 Marietta Ave** in the Town of Ixonia on PIN 012-0816-2232-022 (0.53 Acre) in a Community zone.

**CU1857-15 – David Rasmussen:** Conditional use for a kennel housing up to eight dogs in an A-1 Agricultural zone at **N3930 Betschler Rd**. The site is on PIN 014-0615-1324-000 (33.267 Acres) in the Town of Jefferson.

**CU1858-15 – Todd & Catherine Lueder:** Conditional use for a home occupation/electrical business in an A-T, Agricultural Transition zone at **N1204 Poeppel Rd**, Town of Koshkonong, on PIN 016-0514-2121-003 (1.427 Acres).

*A quorum of any Jefferson County Committee, Board, Commission or other body, including the Jefferson County Board of Supervisors, may be present at this meeting.*

**Individuals requiring special accommodations for attendance at the meeting should contact the County Administrator at 920-674-7101 24 hours prior to the meeting so that appropriate arrangements can be made.**

*A recording of the meeting will be available from the Zoning Department upon request.*

**Resolution supporting more severe criminal penalties for battery  
committed against child welfare and juvenile case workers**

Executive Summary

Under current Wisconsin law, a person who intentionally causes bodily harm to another person commits the crime of battery. A person convicted of battery is subject to fines and imprisonment. Current law provides more severe penalties for "special circumstances battery" committed against certain government officials, employees and agents such as law enforcement officers, fire fighters and probation and parole agents. Proposed legislation extends these special circumstances battery provisions to a person who is employed by or under contract with a court, a county department of human or social services, a tribal child welfare agency or the department of children and families and provides intake, dispositional or other services relating to child welfare or juvenile justice.

WHEREAS, under current law, a person who intentionally causes bodily harm to another person commits the crime of battery, and if convicted, is subject to fines and imprisonment, and

WHEREAS, current law provides more severe penalties for "special circumstances battery" committed against certain government officials, employees and agents such as law enforcement officers, fire fighters and probation and parole agents, and

WHEREAS, a person convicted of intentionally causing bodily harm to certain government officials is guilty of a Class H felony and may be fined not more than \$10,000 or sentenced to a term of imprisonment of not more than six years or both, and

WHEREAS, proposed legislation extends these special circumstances battery provisions to a person who is employed by or under contract with a court, a county department of human or social services, a tribal child welfare agency or the department of children and families and who provides intake, dispositional or other services relating to child welfare or juvenile justice.

NOW, THEREFORE, BE IT RESOLVED that the Jefferson County Board of Supervisors supports the proposed legislation that extends special circumstances battery provisions to a person who is employed by or under contract with a court, a county department of human or social services, a tribal child welfare agency or the department of children and families and who provides intake, dispositional or other services relating to child welfare or juvenile justice.

BE IT FURTHER RESOLVED that the Jefferson County Clerk be directed to forward a copy of this resolution to the Governor of the State of Wisconsin, the Wisconsin Counties Association and Jefferson County's Legislative Representatives.

*Fiscal Note: This resolution will have no fiscal impact to Jefferson County.*

Ayes \_\_\_\_\_ Noes \_\_\_\_\_ Abstain \_\_\_\_\_ Absent \_\_\_\_\_ Vacant \_\_\_\_\_

Requested by

Administration & Rules Committee; Human Services Board

J. Blair Ward: 09-25-15; 09-30-15      REVIEWED: Administrator [Signature]; Corp. Counsel [Signature]; Finance Director [Signature]      10-13-15

**RESOLUTION NO. 2015-\_\_\_\_\_****Resolution to support funding of comprehensive, sustainable, effective and evidence based communicable disease control and prevention**Executive Summary

A strong public health infrastructure is paramount to the health of all citizens. Emerging and existing communicable diseases threaten the lives and well-being of Wisconsin residents. These communicable diseases include Ebola, H1N1, measles, HIV/AIDS, tuberculosis, influenza and measles and require substantial resources to contain. Wisconsin has no dedicated federal or state funding sources for communicable disease control and prevention. Wisconsin local health department communicable disease programs protect residents by investigating and controlling communicable diseases, collecting data, educating the community about prevention and the importance of immunizations, and caring for those affected by these diseases. Public health departments have been successful in controlling communicable diseases through case reporting and involvement of public health staff in referral of exposed persons for screening and prevention services. Local health departments have placed a high priority on communicable disease control which is one of the ten essential functions of public health. This resolution urges the state legislature to develop and enact bipartisan support for funding of comprehensive, sustainable, effective and evidence based communicable disease control and prevention for the lives and well-being of Wisconsin residents.

---

WHEREAS, Wisconsin has no dedicated, stable federal and state funding sources for communicable disease control and prevention efforts, and

WHEREAS, a strong public health infrastructure is paramount to the health of all citizens, and

WHEREAS, emerging and existing communicable diseases such as Ebola, H1N1, measles, HIV and AIDS, tuberculosis, influenza, measles, syphilis, gonorrhea, rabies, hepatitis, polio and pertussis can threaten the lives and well-being of Wisconsin residents, and

WHEREAS, emerging and re-emerging communicable diseases threaten personal and community safety and require substantial resources to contain, and

WHEREAS, Wisconsin local health department communicable disease programs protect residents by investigating and controlling communicable diseases, collecting data, educating the community about prevention and the importance of immunizations, and caring for those affected by these diseases, and



WHEREAS, public health departments have been successful in controlling communicable diseases through case reporting and involvement of public health staff in referring exposed persons for screening and prevention services, and

WHEREAS, local health departments and the State of Wisconsin have demonstrated commitment, competence and success in assuring the confidentiality of persons with reported communicable disease for decades, and

WHEREAS, local health departments have placed a high priority on communicable disease control, and

WHEREAS, communicable disease control is one of the ten essential functions of public health.

NOW, THEREFORE, BE IT RESOLVED that the Jefferson County Board of Supervisors urges the state legislature to develop and enact bipartisan support for funding of comprehensive, sustainable, effective and evidence based communicable disease control and prevention for the lives and well-being of Wisconsin residents.

BE IT FURTHER RESOLVED that the Jefferson County Clerk be directed to forward a copy of this resolution to the Governor of the State of Wisconsin, the Wisconsin Counties Association and Jefferson County's Legislative Representatives.

*Fiscal Note: This resolution will have no fiscal impact to Jefferson County.*

Ayes \_\_\_\_\_ Noes \_\_\_\_\_ Abstain \_\_\_\_\_ Absent \_\_\_\_\_ Vacant \_\_\_\_\_

Requested by  
Board of Health

J. Blair Ward: 09-25-15

REVIEWED: Administrator BAW; Corp. Counsel DBL; Finance Director BL

10-13-15



## RESOLUTION NO. 2015-43

### Resolution recommending future allocation of funds to the Farmland Conservation Easement Commission for the Purchase of Agricultural Conservation Easements

#### Executive Summary

In 2006, the Jefferson County Board of Supervisors created the Jefferson County Farmland Conservation Easement Commission and provided \$20,000 to develop a Purchase of Development Rights (PDR) program with future funding to be determined by the County Board. In 2008, the County Board directed that a portion of proceeds from the sale of County owned farmland in the amount of \$260,000 be allocated to the program. The Board also directed the Finance Committee to recommend allocation of proceeds from future sales of County owned farmland for the purchase of agricultural conservation easements (see attached). Currently, the Jefferson County Farmland Conservation Easement Commission has committed nearly all of these funds toward the purchase of conservation easements and is seeking additional funding to continue the program. Based on the County's past practice of funding the program through proceeds of County land, the Farmland Conservation Easement Commission proposes that a portion of the net proceeds from the sale of the former highway shop, not to exceed 20%, be allocated to the Farmland Conservation Easement Commission to continue the County's Purchase of Agricultural Conservation Easements (PACE) program.

*At the September 8, 2015 County Board of Supervisors meeting this resolution was referred to Finance Committee for recommendation. The Finance Committee met on October 8, 2015, to discuss a recommendation. The Finance Committee voted 5-0 to recommend the County continue following Resolution No. 2008-15 (Resolution establishing mechanism to fund purchase of farmland conservation easement). The Committee felt it would not be fiscally responsible to force the County into automatic payout which may result in a hardship to the County. With continuing to follow Resolution No. 2008-15, the Committee then could look at the sale of property on a case by case basis.*

---

WHEREAS, the County Board with adoption of the 1999 Jefferson County Agricultural Preservation and Land Use Plan recommended the establishment of a Purchase of Agricultural Conservation Easements (PACE) program, and renewed this commitment with the approval of the 2012 amended Agricultural Preservation and Land Use Plan, and

WHEREAS, Resolution No. 2006-86 established the Jefferson County Farmland Conservation Easement Commission and said resolution initially provided \$20,000 to develop a Purchase of Development Rights (PDR) program, and established that, from time to time, future funding mechanisms would be determined by the County Board, and

WHEREAS, the County Board approved Resolutions No. 2008-15 and No. 2008-55, per the Finance Committee's recommendation, directing that a portion of proceeds from the sale of County owned farmland be allocated (\$260,000) to the PCE Program, and

WHEREAS, the Commission has judiciously committed nearly all these funds to the purchase of conservation easements leveraging matching, private, state and federal funds, and said easement contracts were approved by the County Board, and

WHEREAS, the new Highway Shop has required the removal of more County owned farmland from agricultural use, and

WHEREAS, precedent has been set for the allocation of funds equivalent to the County Farm acreage's agricultural value to be set aside for the Commission's agricultural conservation easement program when County farmland converted from its agricultural status,

NOW, THEREFORE, BE IT RESOLVED that if and when the former highway shop property is sold, a portion of these funds equivalent to the agricultural value of the former County Farm property now converted to Highway Department use, not to exceed 20% of the net proceeds, be allocated to the Farmland Conservation Easement Commission to continue the County's Purchase of Agricultural Conservation Easements program.

*Fiscal Note: The fiscal impact of this resolution will be determined after the sale of the former Highway Department facility and the allocation of 20% of the net proceeds to the Purchase of Agricultural Conservation Easements Program.*

Ayes\_\_\_\_\_ Noes\_\_\_\_\_ Abstain\_\_\_\_\_ Absent\_\_\_\_\_ Vacant\_\_\_\_\_

Requested by:  
Farmland Conservation Easement Commission

10-13-15

Steven Nass: 08-10-15; J. Blair Ward: 09-02-15; 09-03-15; Brian Lamers 10-8-15

REVIEWED: Administrator: JBW; Corp. Counsel: JBW; Finance Director: BL

**RESOLUTION NO. 2015-42****Resolution to institute a new Farmland Conservation funding method**Executive Summary

In 2006, the Jefferson County Board of Supervisors created the Jefferson County Farmland Conservation Easement Commission and provided \$20,000 to develop a Purchase of Development Rights (PDR) program with future funding to be determined by the County Board. In 2008, the County Board directed that a portion of proceeds from the sale of County owned farmland in the amount of \$260,000 be allocated to the program. The Board also directed the Finance Committee to recommend allocation of proceeds from future sales of County owned farmland for the purchase of agricultural conservation easements (see attached). Currently, the Jefferson County Farmland Conservation Easement Commission has committed nearly all of these funds toward the purchase of conservation easements and is seeking additional funding to continue the program. Based on the County's past practice of funding the program through proceeds of County land, the Farmland Conservation Easement Commission proposes that proceeds from the sale of all County owned farmland or land which is capable of being farmed, not to exceed the agricultural value of such land, shall be allocated to the Purchase of Agricultural Conservation Easements program and applied toward the purchase of farmland conservation easements as administered by the Jefferson County Farmland Conservation Easement Commission.

*At the September 8, 2015 County Board of Supervisors meeting this resolution was referred to Finance Committee for recommendation. The Finance Committee met on October 8, 2015, to discuss a recommendation. The Finance Committee voted 5-0 to recommend the County continue following Resolution No. 2008-15 (Resolution establishing mechanism to fund purchase of farmland conservation easement). The Committee felt it would not be fiscally responsible to force the County into automatic payout which may result in a hardship to the County. With continuing to follow Resolution No. 2008-15, the Committee then could look at the sale of property on a case by case basis.*

---

WHEREAS, agriculture is a pillar of the Jefferson County economy, and

WHEREAS, the protection of farmland is supported by the County Board and County residents, and

WHEREAS, the County Board, with adoption of the 1999 Jefferson County Agricultural Preservation and Land Use Plan, recommended the establishment of a PACE (Purchase of Agricultural Conservation Easements) program and renewed this commitment with the approval of the 2012 amended Agricultural Preservation and Land Use Plan, and

WHEREAS, Resolution No. 2006-86 established the Jefferson County Farmland Conservation Easement Commission which designated \$20,000 to develop a PCE program and established that, from time to time, future funding mechanisms would be determined by the County Board, and

WHEREAS, recent changes to Wisconsin state law have eliminated a funding source for the Purchase of Agricultural Conservation Easements (PACE) program, and

WHEREAS, the Jefferson County Farmland Conservation Easement Commission has ongoing contract discussions with landowners wishing to preserve agricultural land, and

WHEREAS, funds from Jefferson County are required to provide the necessary incentive for land owners to enter into farmland conservation easements,

NOW, THEREFORE, BE IT RESOLVED that for the purpose of continuing the PACE program in Jefferson County, proceeds from the sale of all County owned farmland or land which is capable of being farmed, not to exceed the agricultural value of such land, shall be allocated to the PACE program and applied toward the purchase of farmland conservation easements as administered by the Jefferson County Farmland Conservation Easement Commission.

*Fiscal Note: The fiscal impact of this resolution will be determined after the sale of county owned agricultural land and the allocation of proceeds to the purchase of Agricultural Conservation Easements Program.*

Ayes \_\_\_\_\_ Noes \_\_\_\_\_ Abstain \_\_\_\_\_ Absent \_\_\_\_\_ Vacant \_\_\_\_\_

Requested by  
Farmland Conservation Easement Commission

10-13-15

Walt Christensen: 08-10-15; J. Blair Ward: 09-02-15; 09-03-15; Brian Lamers 10-8-15  
REVIEWED: Administrator: BR; Corp. Counsel: JBL; Finance Director: BL

## RESOLUTION NO. 2015-\_\_\_\_\_

## Resolution for Awarding Refuse Services Contract

Executive Summary

In 2009, Jefferson County entered into a 3 year contract with Veolia, which is now Advanced Disposal, to provide refuse collection for the County. This contract expired in 2012 and the County continued to receive refuse collection services from Advanced Disposal, but without any contractual obligation. In 2015, the County published a Request for Proposals for refuse collection seeking to enter into a contract for services for a minimum of two years and a maximum of seven years. After reviewing all proposals, the Finance Committee determined that Advanced Disposal is the lowest responsible bidder and recommended that the County Administrator negotiate a contract with Advanced Disposal for refuse collection as described in the request for proposals for up to seven years.

WHEREAS, Jefferson County published a Request for Proposals seeking refuse collection services, and

WHEREAS, proposals were received as shown below:

	Advanced Disposal			Waste Management		
	Refuse Fees	Highway Facility On-Call/Per Empty	Fair Week	Refuse Fees	Highway Facility On-Call/Per Empty	Fair Week
2016	\$16,812	\$35	\$800	\$20,107	\$38	\$482
2017	\$17,160	\$36	\$816	\$20,107	\$38	\$482
2018	\$17,520	\$37	\$832	\$20,107	\$38	\$482
2019	\$17,892	\$38	\$848	\$20,710	\$39	\$496
2020	\$18,252	\$39	\$864	\$21,331	\$41	\$511
2021	\$18,612	\$40	\$880	\$21,970	\$42	\$526
2022	\$18,984	\$41	\$896	\$22,630	\$43	\$542

WHEREAS, after reviewing all proposals, the Finance Committee determined that Advanced Disposal was the lowest responsible bidder and recommended that the County Administrator negotiate a contract with Advanced Disposals for refuse collection as described in the request for proposals for up to seven years.

NOW, THEREFORE, BE IT RESOLVED that the County Administrator is authorized to negotiate a contract with Advanced Disposal at the price offered in its proposal, with adjustments made as needed depending on the number of pickups and containers required, for up to seven years.

*Fiscal Note: The cost of 2016 refuse collection will be \$16,812 which will increase annually according to the annual fee schedule. Funds will be budgeted in the 2016 budget and each year after.*

Ayes \_\_\_\_\_ Noes \_\_\_\_\_ Abstain \_\_\_\_\_ Absent \_\_\_\_\_ Vacant \_\_\_\_\_

Requested by  
Finance Committee

10-13-15

Brian Lamers: 9/8/15; Blair Ward: 9/8/15

REVIEWED: Administrator BR; Corp Counsel JBW; Finance Director BL



**Resolution disallowing the claims of Perry Conkle, Krista Beaudry,  
Laura Koplinski, Dawn Boley and Annette Atwater**

WHEREAS, on September 1, 2015, Jefferson County received a claim from Perry Conkle in an estimated amount of \$65.00 for injuries allegedly sustained at Dorothy Carnes Park when claimant fell through the deck hurting his left leg and arm, and

WHEREAS, on September 1, 2015, Jefferson County received a claim from Krista Beaudry in an amount of \$506.40 for damages to a 2013 Infiniti automobile on August 27, 2015, which was traveling on Highway 59 that had been seal coated on August 26, 2015, when a vehicle traveling in the opposite direction threw up gravel that hit the claimant's windshield, and

WHEREAS, on September 2 2015, Jefferson County received a claim from Laura Koplinski in an estimated amount of \$75.00 for damages to a 2015 Subaru Forester automobile on August 28, 2015, which was traveling on Highway 59 that had been seal coated on August 26, 2015, when a vehicle traveling in the opposite direction threw up gravel that chipped the claimant's windshield, and

WHEREAS, on September 10, 2015, Jefferson County received a claim from Dawn Boley in an amount of \$281.57 for damages to a 2009 Jeep Patriot vehicle on August 31, 2015, which was traveling on Highway 59 that had been seal coated on August 26, 2015, when a vehicle traveling in the opposite direction threw up gravel that hit claimant's windshield, and

WHEREAS, on September 29, 2015, Jefferson County received a claim from Annette Atwater in an amount of \$252.04 for damages to a 2004 Honda Odyssey minivan on September 2, 2015, which was traveling on Highway 59 that had been seal coated on August 26, 2015, when a vehicle going in the opposite direction threw up gravel that hit the claimant's windshield, and

WHEREAS, in regard to the claims of loose gravel damage, the Jefferson County Highway Department had posted "loose gravel" signs on Highway 59, and

WHEREAS, said damages are alleged to be the result of negligence of Jefferson County, its agents, officials, officers or employees, and

WHEREAS, Jefferson County's insurance carrier, Wisconsin Municipal Mutual Insurance Company, recommends disallowance of the claims, on the basis that the County is not responsible for the alleged damage.

NOW, THEREFORE, BE IT RESOLVED that the Jefferson County Board of Supervisors hereby disallows said claims and directs the Corporation Counsel to give the claimants notice of disallowance.

*Fiscal Note: These matters have been referred to Wisconsin Municipal Mutual Insurance Company (WMMIC) and will be resolved in accordance with the terms of the County's policy.*

Ayes \_\_\_\_\_ Noes \_\_\_\_\_ Abstain \_\_\_\_\_ Absent \_\_\_\_\_ Vacant \_\_\_\_\_

Requested by Finance Committee

Connie Freeberg: 09-30-15

10-13-15

REVIEWED: Administrator: BAW; Corp. Counsel: JBW; Finance Director: BL

## ORDINANCE NO. 2015-\_\_\_\_

**Amend Personnel Ordinance HR0461, Military Leave Procedure, to provide employees military leave without loss of pay for up to 10 days**Executive Summary

Ordinance 2011-31, adopted on March 13, 2012, by the Jefferson County Board of Supervisors created the current Military Leave Procedure, section HR0461 of the Personnel Ordinance. The current ordinance gives employees the option to substitute accrued time while on leave; otherwise the leave is unpaid, other than military wages received which may be less than wages earned with the County. The current ordinance does maintain the employees' benefits, including health and dental, for the first 36 months of leave. The employee is required to pay only the employee-share of the contribution for the first 18 months.

It is the recommendation of the Human Resources Committee to update the Personnel Ordinance by amending the Military Leave Procedure to provide employees military leave without loss of pay for up to 10 days or 80 hours, whichever is less. Employees would reserve the right to substitute appropriate accrued pay, including the use of sick time.

WHEREAS, Jefferson County recognizes the personal and professional sacrifices employees in the military must make to serve their country, and

WHEREAS, Jefferson County currently has six employees in the uniformed services who are eligible for Military Leave.

NOW, THEREFORE, BE IT RESOLVED that the Human Resources Committee supports and recommends the amendment of Section HR0461, Military Leave Procedure, to ensure that employees on military leave are not without loss of pay for up to 10 days or 80 hours of training, whichever is less.

THE COUNTY BOARD OF SUPERVISORS OF JEFFERSON COUNTY DOES HEREBY ORDAIN AS FOLLOWS:

Section 1. Section HR0461, Military Leave Procedure, is amended as follows, creating sections C (1) and C (2) and renumbering remaining sections:

**HR0461      MILITARY LEAVE PROCEDURE.****C.      Wages**

1. Effective January 1, 2016, employees who are required to attend training as members of the uniformed services shall receive up to ten (10) days or eighty (80) hours, whichever is less, of pay per calendar year while attending said training. A county employee who is required to report for military training shall be paid his or her county pay,

excluding overtime, upon submission of employee's leave and earnings statement (LES), less any military pay that the employee receives. If the military pay equals or exceeds the employee's county pay, no payment for salary or wages will be paid to the employee from the County. Allowances received during military training will be excluded from the pay calculation.

2. An employee has the choice to use vacation, holiday, sick, random or compensatory time, but cannot be forced to do so. However, any carryovers into the next calendar year will be limited in accordance with applicable ordinances. If an employee chooses to use accrued time, there is no requirement to submit a leave and earnings statement.
13. Any other Military Leave is unpaid. An employee has the choice to use vacation, holiday, random or compensatory time, but cannot be forced to do so. However, any carryovers into the next calendar year will be limited in accordance with applicable ordinances.
- 2.4. Employees on Military leave will continue to receive any 'across-the board' wage adjustment approved by County Board.
- 3.5. Employees shall receive any step increase they reasonably would have been afforded if they had been actively working.
- 4.6. Upon return from Military Leave, employees shall be promoted to positions that they reasonably would have been promoted to if they had been actively working and based on seniority.

**D. Return from Military Leave**

1. If employee is gone 1 – 30 days, the employee should report to work the next scheduled workday. Usually 8 hours is given to rest before returning to work.
2. If employee is gone 31 – 180 days, the employee has 14 days to reapply and return to work.
3. If employee is gone 181+ or more days, the employee has 90 days to reapply and return to work.
4. It is not reasonable to assume an employee will necessarily pass a probationary period, as defined in a union contract, without sufficient time to observe the employee's work. Therefore, if an employee is in a probationary period when military leave begins, the remainder of the probationary time period must be completed upon return. [am. 3/13/12, ord. 2011-31]
5. An employee returning from military leave ~~shall~~ has the right to be reemployed in a position according to USERRA



regulations. This may include being promoted, reclassified, demoted, transferred, placed on layoff or terminated if circumstances changed as to make reemployment impossible or unreasonable. [am. 3/13/12, ord. 2011-31]

6. If military leave lasts more than 30 days, Federal law gives employees certain job protection for 6 – 12 months after return.

Section 2. Section HR0680(B), Sick Leave with Pay, is amended as follows:

**HR0680 SICK LEAVE WITH PAY**

- B. Use for employee: An employee may use sick leave with pay for absences necessitated by the employee's injury, illness, or medical appointments including diagnostic treatment, dental procedures, optician's services, and other medical care performed by a duly licensed practitioner, and military leave as provided under HR0461.

Section 3. This ordinance shall be effective January 1, 2016.

*Fiscal Note: Military Leave hours/pay would already be included in the total hours budgeted for each employee, as are accrued benefits such as vacation, sick, etc. Therefore, there is no fiscal impact.*

Ayes \_\_\_\_\_ Noes \_\_\_\_\_ Abstain \_\_\_\_\_ Absent \_\_\_\_\_ Vacant \_\_\_\_\_

Requested by  
Human Resources Committee

10-13-15

Terri M. Palm; 7-29-15; J. Blair Ward; 7-31-15; Terri Palm; 09-11-15; 10-06-15

REVIEWED: Administrator hth; Corp. Counsel [Signature]; Finance Director bl

ORDINANCE NO. 2015-\_\_\_\_

**Amend Personnel Ordinance HR0480, Smoking Policy, to conform with the  
Jefferson County Smoke Free Air Act**

Executive Summary

Ordinance 2015-06, adopted on June 9, 2015, by the Jefferson County Board of Supervisors amended Ordinance 2003-06, Jefferson County Smoke Free Act, prohibiting the use of e-cigarettes and electronic delivery devices at any time in any county-owned, rented, or leased building, including the Fair Park grandstand.

It is the recommendation of the Human Resources Committee to update the Personnel Ordinance by amending the Smoking Policy to conform to and be consistent with the Jefferson County Smoke Free Act.

WHEREAS, an electronic cigarette is an oral device that can be used to simulate smoking which produces an aerosol of nicotine and/or other substances, including ultrafine particles, heavy metals, cancer-causing chemicals and other chemicals harmful to the human body, such as formaldehyde and diacetyl, and

WHEREAS, no e-cigarette has been approved by the Food and Drug Administration as a cessation device and e-cigarette users actually often continue to also smoke regular cigarettes or have increased intentions to smoke conventional cigarettes, and

WHEREAS, on June 6, 2015, the Jefferson County Board of Supervisors adopted Ordinance 2015-06 amending the Jefferson County Smoke Free Act policy prohibiting the use of e-cigarettes on any county-owned, rented or leased property.

NOW, THEREFORE, BE IT RESOLVED that the Human Resources Committee supports and recommends the amendment of Section HR0480, Smoking Policy, to compliment the Jefferson County Smoke Free Act policy and prohibit employees from using e-cigarettes on any county-owned, rented or leased property.

THE COUNTY BOARD OF SUPERVISORS OF JEFFERSON COUNTY DOES HEREBY ORDAIN AS FOLLOWS:

Section 1. Section HR0480, Smoking Policy, is amended as follows, creating sections A and renumbering remaining sections:

**HR0480** **SMOKING POLICY.** "Smoking" as the term is used in this Ordinance means burning or holding, or inhaling or exhaling smoke from a lighted cigar, cigarette, pipe or any other lighted smoking item or equipment inhaling, exhaling, burning or carrying any lighted or heated cigar, cigarette, pipe, or any other lighted or

heated tobacco or plant product intended for inhalation, including hookahs and marijuana, whether natural or synthetic, in any manner or in any form. "Smoking" shall include the use of an electronic delivery device which creates an aerosol or vapor, in any manner or in any form, or the use of any oral smoking device for the purpose of circumventing the prohibition of smoking.

A. "E-Cigarette or Electronic Delivery Device" shall mean any product containing or delivering nicotine or any other substance intended for human consumption that may be used by a person to simulate smoking through inhalation of vapor or aerosol from the product. "Electronic Delivery Device" shall include any such device, whether manufactured, distributed, marketed, or sold as an e-cigarette, e-cigar, e-pipe, e-hookah, or vape pen, or under any other product name or descriptor."

Section 2. This ordinance shall be effective after passage and publication as provided by law.

*Fiscal Note: There is no fiscal impact.*

Ayes \_\_\_\_\_ Noes \_\_\_\_\_ Abstain \_\_\_\_\_ Absent \_\_\_\_\_ Vacant \_\_\_\_\_

Requested by  
Human Resources Committee

10-13-15

Terri M. Palm: 9-11-15

REVIEWED: Administrator far; Corp. Counsel BLW; Finance Director pr

**Resolution to implement Integrated Public Alert and Warning System (IPAWS)**Executive Summary

The Integrated Public Alert and Warning System (IPAWS) is an internet based warning system that can be used by Federal, State, and local authorities to issue critical public alerts and warnings. The IPAWS system is able to integrate with local systems to send warnings that use Common Alerting Protocol standards such as the National Oceanic and Atmospheric Administration (NOAA) Weather Radio and other public alerting systems from a single interface. This system will send alerts to cell phones in geographically targeted areas within Jefferson County even when cellular networks are overloaded and no longer support person-to-person calls, texts, or emails. Implementing this system in Jefferson County will provide public safety officials with an effective way to quickly alert and warn the public about serious emergencies. IPAWS is endorsed by the state of Wisconsin and is the most cost effective method of issuing critical public alerts and warnings.

WHEREAS, during an emergency, public safety officials need to quickly alert the public about serious emergencies, and

WHEREAS, the Integrated Public Alert and Warning System (IPAWS) is a warning system that will allow public safety officials to quickly alert the public about serious emergencies by sending alerts to cell phones in geographically targeted areas within Jefferson County, and

WHEREAS, IPAWS is endorsed by the state of Wisconsin and is the most cost effective method of issuing critical public alerts and warnings, and

WHEREAS, AlertSense is a company that specializes in mass notification and provides services to federal, state and local governments, university campuses, corporations, and not-for-profit entities across the country, and

WHEREAS, AlertSense has offered to provide the Integrated Public Alert and Warning System (IPAWS) to Jefferson County for an annual cost of \$2,250.00.

NOW, THEREFORE, BE IT RESOLVED that the Jefferson County Administrator is authorized to enter into a contract with AlertSense to provide Jefferson County with the Integrated Public Alert and Warning System (IPAWS) for an annual cost of \$2,250.00 which may be adjusted as necessary in future years.

*Fiscal Note: The fiscal impact of this resolution is an annual cost of \$2,250.00 and may be adjusted as necessary in future years. Funds have been included in the recommend 2016 Executive Budget.*

Ayes \_\_\_\_\_ Noes \_\_\_\_\_ Abstain \_\_\_\_\_ Absent \_\_\_\_\_ Vacant \_\_\_\_\_

Requested by

Law Enforcement & Emergency Management Committee

J. Blair Ward: 09-24-15; 09-28-15 REVIEWED: Administrator Jan; Corp. Counsel JD; Finance Director OC

10-13-15

**RESOLUTION NO. 2015-\_\_\_\_\_****Resolution Establishing Medical Examiner Autopsy Transport Fees and Cremation Fees**Executive Summary

The Jefferson County Medical Examiner's Office is responsible for ordering autopsies to assist in determining cause and manner of death for deaths occurring in Jefferson County. County ordered autopsies are performed in Milwaukee and the cost of transport from place of death to place of autopsy is presently funded either by the County or the decedent's family. After reviewing this practice, the Jefferson County Medical Examiner is recommending that Jefferson County pay the transport cost from place of death to place of autopsy for all County ordered autopsies. The Medical Examiner solicited quotes to determine the least expensive transport service. All funeral homes in Jefferson County and other interested funeral homes were given an opportunity to provide quotes. There were 6 responses with \$435.00 being the highest quote and \$175.00 being the lowest quote. The Medical Examiner is seeking to enter into a contract for up to two years with Thelen Funeral Services to ensure that the County continues to have autopsy transport services provided at the most cost effective price.

The Jefferson County Medical Examiner's Office is further responsible for all of the charges associated with the disposition of unclaimed or unidentified bodies which includes transport and burial or cremation. All funeral homes in Jefferson County and other interested funeral homes were given an opportunity to provide quotes. There were 6 responses with \$1,825.00 being the highest quote and \$525.00 being the lowest quote. The Medical Examiner is seeking to enter into a contract for up to two years with Thelen Funeral Services to ensure that the County continues to have disposition services provided at the most cost effective price.

---

WHEREAS, the Jefferson County Medical Examiner orders approximately 45 autopsies per year for deaths occurring in Jefferson County, and

WHEREAS, the current practice in Jefferson County is to either require next of kin to pay for the transport or for the County to pay for transport if a funeral home has not yet been chosen by the family, and

WHEREAS, the Jefferson County Medical Examiner recommends County funding of transport costs for all autopsies ordered by the Jefferson County Medical Examiner, and

WHEREAS, County funding of all autopsies ordered by the Jefferson County Medical Examiner will result in a fixed cost for transportation to autopsies unless the decedent's family chooses to use another transport company in which case the family would be required to pay the difference, and

WHEREAS, the Jefferson County Medical Examiner solicited quotes for the least expensive autopsy transport service and determined that Thelen Funeral Services was the lowest quote at \$175.00 per transport, and

WHEREAS, the Jefferson County Medical Examiner's Office is responsible for all of the charges associated with the disposition of unclaimed or unidentified bodies, including transportation and burial or cremation, and

WHEREAS, the Jefferson County Medical Examiner solicited quotes for the least expensive service for disposition of unclaimed or unidentified bodies and determined that Thelen Funeral Services was the lowest quote at \$525.00, and

WHEREAS, the Medical Examiner is seeking to enter into a contract for up to two years for autopsy transport services and disposition services for unclaimed or unidentified bodies to ensure that the County continues to receive these services at the most cost effective price.

NOW, THEREFORE, BE IT RESOLVED that the County Administrator is hereby authorized to enter into a contract with Thelen Funeral Services for autopsy transport services and disposition services for unclaimed or unidentified bodies for a period of up to two years for an estimated amount of \$9,500.00 per year which may be renewed and adjusted as necessary in future years.

*Fiscal Note: The fiscal impact of this resolution is anticipated to be \$8,000.00 per year for autopsy transport services and \$1,500.00 per year for disposition services for unclaimed or unidentified bodies. These amounts may be adjusted as necessary in future years. Funds have been included in the recommend 2016 Executive Budget.*

Ayes \_\_\_\_\_ Noes \_\_\_\_\_ Abstain \_\_\_\_\_ Absent \_\_\_\_\_ Vacant \_\_\_\_\_

Requested by  
Law Enforcement and Emergency Management Committee

10-13-15

J. Blair Ward: 09-24-15; 09-28-15 REVIEWED: Administrator JBW; Corp. Counsel SBW; Finance Director B



**RESOLUTION NO. 2015-\_\_\_\_\_****Approval of Implementation Plan for the Rock River Public Access Site – Cappie’s Landing**Executive Summary

The Jefferson County Parks Department is working in cooperation with the Wisconsin DNR to manage the former Watertown Outboarders, Inc. parcel of land located adjacent to the Rock River in the Town of Watertown as a River-based Conservation Area. The park is 6.6 acres, has approximately 600 feet of river frontage along the Rock River and lies between the City of Watertown and the Village of Johnson Creek. This River-based Conservation Area will provide non-motorized and motorized access to the Rock River. The site will also be developed and maintained to accommodate low intensity, park-like day use opportunities such as shore fishing and gathering and recreation sites. Picnic tables will be provided in strategic locations throughout the property and a limited number of primitive camp sites will be developed for visitors who arrive by non-motorized watercraft allowing for extended trips on the river for water enthusiasts.

---

WHEREAS, Jefferson County and Wisconsin DNR have developed an Implementation Plan for the Rock River Public Access Site – Cappie’s Landing in Watertown, and

WHEREAS, the property is located within the Glacial Heritage Area (GHA) project area and a comprehensive master plan was completed and approved by the Natural Resources Board in October 2009 and subsequently approved by the Jefferson County Board of Supervisors, and

WHEREAS, the master plan authorizes a unique cooperative approach between the Department and the County to establish and manage new Conservation Parks, linking trails and River-based Conservation Areas, and

WHEREAS, this property qualifies as a River-Based Conservation area under the GHA master plan with the primary purposes of improving water quality, providing travel routes for wildlife, maintaining and restoring riparian habitat and providing recreation areas, and

WHEREAS, this 6.6 acre site shall be a river access put-in/take-out site and will include picnicking, water based access, primitive camping, shore fishing as well as motorized boat access, and

WHEREAS, the Parks Committee recommends approval of the Implementation Plan.

NOW, THEREFORE, BE IT RESOLVED that the Implementation Plan for the Rock River Public Access Site – Cappie’s Landing in Watertown is hereby approved.

BE IT FURTHER RESOLVED that implementation of the plan may occur as funds are made available by the Board or from other sources.

*Fiscal Note: No unbudgeted expenditures are planned at this time. Implementation will occur as future funding is obtained from other sources or approved by the Board.*

Ayes \_\_\_\_\_ Noes \_\_\_\_\_ Abstain \_\_\_\_\_ Absent \_\_\_\_\_ Vacant ✓

Requested by  
Parks Committee

10-13-15

Joe Nehmer: 09-28-15

REVIEWED: Administrator *[Signature]*; Corp. Counsel *[Signature]*; Finance Director *[Signature]*



**Implementation Plan**  
**ROCK RIVER PUBLIC ACCESS - CAPPIE'S LANDING**  
A Glacial Heritage Area "River Based Conservation Area"



A collaborative plan by the  
Jefferson County Parks Department and the  
State of Wisconsin Department of Natural  
Resources  
for the recreational use and management  
of the Rock River Public Access – Cappie's Landing  
property

August, 2015

## **INTRODUCTION**

This “Implementation Plan” for the Rock River Public Access Site – Cappie’s Landing (property) provides a blueprint for moving forward with a cooperative venture between the State of Wisconsin Department of Natural Resources (Department) and Jefferson County (County) for the former Watertown Outboarders Inc. parcel of land located adjacent to the Rock River in the town of Watertown owned by the Department.

This property is located within the Glacial Heritage Area (GHA) project area and a comprehensive master plan was completed and approved by the Natural Resources Board in October 2009. The GHA master plan describes how the Department will manage and operate the 30,000 acres currently owned by the Department in the GHA (nearly all of which is within the nine State Wildlife Areas) and authorizes the Department to acquire another 32,000 acres (again, nearly all of which will be within the State Wildlife Areas). The master plan also authorizes a unique cooperative approach between the Department and the County to establish and manage seven new Conservation Parks, linking trails, and River-based Conservation Areas.

This property qualifies as a River-Based Conservation area under the GHA master plan. The primary purpose of the River-Based conservation areas in the GHA are to improve water quality, provide travel routes for wildlife, maintain and restore riparian habitat and provide recreation areas. This property was the first purchase under that acquisition authority.

This implementation plan for the property provides basic background information for the property and outlines the intended future development and management. The basis for developing an implementation plan is outlined in a Memorandum of Understanding (MOU) that was entered into between the County and the Department in June of 2013 to “set forth the agreements and understandings which have been reached ... regarding the acquisition, development and operation of State Park properties the Department purchases and the County operates in the GHA.”

Although this river access site property is not designated as a State Park and at 6.6 acres may not be one of the “larger sites” for river-based access requiring an implementation plan per Section II of the MOU, the Department and the County have determined that development of an implementation plan is beneficial to both parties to clarify roles and responsibilities and set a vision for the future development and management of the site. Furthermore, the intended park-like vision that the County has for the property is beyond just a river access put-in/take-out site as the site will include picnicking, water based access primitive camping, shore fishing as well as motorized boat access which makes this property fit well with the intent of the MOU.

The plans for this property as articulated in this document have been developed collaboratively between the County and the Department. All of the intended uses described in this document are consistent with the GHA master plan. Consistent with the requirements of the MOU, this implementation plan will be posted on the Department’s website for a period of 14 days to allow for public notification and comments on the draft implementation plan.

### **PROPERTY INFORMATION**

This 6.13 acre property is located in the Town of Watertown, within the City of Watertown's extraterritorial boundaries. It lies between the City of Watertown and the Village of Johnson Creek in the north-central part of the County (see map A).

Property address: N8625 Jefferson Road, Watertown, WI 53094

Legal description: A part of Government Lot 7, Section 17, Township 8 North, Range 15 East, Watertown Township, Jefferson County, Wisconsin.

#### **A. Natural and Cultural Resources**

The property's vegetation is primarily mowed turf grass with some low, riparian woods and wetlands. It is fairly level to gently rolling from the east to the lower areas in the west. Approximately two thirds of the property is subject to seasonal flooding. The Rock River is the western boundary of the property and comprises about 600 feet of river frontage.

Currently there is a shallow lagoon adjacent to the boat landing/launch at the site. The area was dredged decades ago to create a protected area to moor boats owned by the Watertown Outboarders Club members. With each flood event, the silt from the river has filled the lagoon creating a very shallow area greatly reducing the effective use of this area for boat mooring or fishing. Department water regulation and zoning staff have evaluated the site and made a recommendation that the lagoon be returned to wetland status as it was prior to the creation of the lagoon.

The Department's Archeologist has been contacted and informed about the intended uses of the property. Records show there are two documented archeological sites on the property. A Natural Heritage Inventory (NHI) check was completed at the time of acquisition. Five species were identified in the review. (Note: Clearances from the Department's Archeologist/Bureau of NHC will be required prior to ground disturbing activities on the property.)

#### **B. Facilities/Utilities**

At the time of purchase there were nine structures located on the property. Eight of these structures have been removed by the Department as they were deemed not needed or compatible with the future intended use of the property, including five of the structures that were removed because they were located in the floodplain and were all damaged by flooding in the past. Based on their condition the structures were either sold and removed from the site or demolished and landfilled.

There is an existing concrete boat ramp which will remain as a motorized and non-motorized access point for boating recreation. A gravel driveway from Jefferson Road terminates at the launch area and a gravel parking area is also located near the launch facility. An open air roofed shelter building still remains adjacent to the boat landing. This structure will be retained to provide shade and protection from the elements for property users. A chain link fence located on the east/west boundary with a sliding gate will be retained to allow the

property to be closed to vehicle traffic if needed during high water events or for other management purposes.

An overhead street lamp exists at the boat launch which was installed by the previous owners. Other non-essential electrical lines have been removed to make the area safe for public use. Telephone service is available at the site but not currently in operation. An existing drilled well was located in the floodplain near the boat landing. Due to its location in the flood prone area, it was abandoned and capped in 2014 by a licensed well installer. A septic holding tank still is located in the floodplain area. The tank has been pumped and cap locked. Abandonment of the vessel will occur in 2015 as part of the site reclamation process.

#### **C. Existing Public Use of the Property**

Site reclamation has been completed with all hazards and buildings removed. The property will open to the public upon signing of this Implementation Plan by Jefferson County and the Department.

#### **D. Real Estate Considerations**

The property was purchased in 2013 by the Department with Stewardship funding and funds donated by the Quirk Foundation. The access driveway from Jefferson Road to the property boundary is located on a deeded easement. The easement is granted to the Department and to the adjacent landowner to the south by the Wisconsin Department of Transportation. At the time of signing of this implementation plan, there was no formal maintenance agreement in place for maintenance of the gravel driveway. The adjacent landowner uses the access for agricultural purposes.

### **SIGNIFICANT MANAGEMENT ISSUE OR NEEDS**

Much of the property is in the floodplain and is seasonally flooded during high water level periods on the Rock River. Although the water recedes fairly rapidly, the surrounding turf areas remain saturated and unusable until the moisture levels decline. There is also an accumulation of mud and silt in some of the flood prone areas left when the water recedes. This will limit the development potential of the western two thirds of the property and may result in periods of closure to use to reduce property turf damage.

### **PROPERTY OVERVIEW**

A primary purpose of the property is to provide non-motorized and motorized access to the Rock River. The site will also be developed and maintained to accommodate low intensity, park-like day use opportunities. Shore fishing will be abundant with 600 feet of river frontage and the development of a fishing pier. The open turf areas will serve as gathering and free play places for users. Picnic tables will be provided in strategic locations throughout the property. Additionally, a limited number of primitive camp sites will be developed for visitors who arrive by non-motorized watercraft allowing for extended trips on the river for water enthusiasts.

## **INTENDED RECREATIONAL USE AND MANAGEMENT**

The property amenities will include the following:

- a motorized/non-motorized boat access ramp (existing)
- ADA accessible floating boat launch pier
- parking area for 20 vehicles with or without trailers (existing)
- picnic tables
- roofed open shelter building (existing)
- street pole lighting (existing) and possibly additional lighting
- shore fishing opportunities (existing)
- ADA accessible hard surface parking stall near launch with walkway to pier
- 2-4 primitive campsites-water access sites only. Fire ring, picnic table and tent pad
- drilled well with a hand pump
- single stall vault toilet
- small gravel parking area off entrance road out of the floodplain

The property will need minimal development to provide the amenities listed above. The existing site has well established turf grass for both the picnic areas and the camp site area. The existing gravel entrance road and parking area near the launch are also in good condition. The existing boat ramp is operational and the funds for a pier were donated by the former WTO Club organization. Department engineers are developing a design and will soon bid out the pier project. The Quirk Foundation has provided the County's Parks Department with a donation to cover the costs of installing a well/hand pump, vault toilet and the campground amenities for the sites.

Longer term development will include removal of old concrete slabs on the river shoreline to be replaced with natural rock rip-rap. The lagoon will also be restored to wetland habitat. The Department will take the lead on these two projects and attempt to secure funding to accomplish the projects.

It is important to note that during periods of high water, the lower portion of the property will be unavailable for user groups. The upper area (east side) will still provide a place for canoe/kayaks to launch and the camp sites can likely remain open.

See map B for location of existing facilities and approximate location of future facilities.

## **ROLES AND RESPONSIBILITIES**

This is a cooperative venture between the Department and the County. Responsibilities of each party are outlined here and can be amended by agreement of both parties.

After approval of this plan, the Department and the County will enter into a formal easement agreement which will provide the County with the right to manage the lands and develop and operate the property.

### **A. Property Maintenance/Management**

County: Routine maintenance including, but not limited to turf maintenance, building cleaning, trash/recycling removal, snow removal, pier maintenance, roofing, tree



removal/trimming, road and lot maintenance, utility costs, and the associated management responsibilities typically associated with public lands.

Department: Project boundary posting with GHA signs and provide replacement signs as needed. Sign design will include either the logo or text recognizing the Department and the County's Parks Department as well as including the GHA logo. Signs must conform with Department standards.

**B. Development**

All development on the property will be in accordance with applicable state and federal regulations and will adhere to local land use (zoning) ordinances as practicable and consistent with Department policy.

Archeological clearance will be required when soil disturbance work is required that may impact the cultural resources as identified on the mapped sites from the Historical Society.

Development is subject to obtaining adequate funding.

**a. Division of responsibilities**

County: Drinking water well/pump, vault toilet and campground development. The County will work with and seek concurrence from the Department on the design and placement of new facilities.

Department: Shoreline restoration (rip-rap) lagoon restoration, floating ADA accessible pier, hard surface parking stall and walkway.

**DEPARTMENT PROPERTY CONTACT**

Dave Borsechnik, Recreation Specialist Sr., Fitchburg, 608-275-3249

**COUNTY PROPERTY CONTACT**

Joe Nehmer, Park Director, Jefferson County, 920-674-7260

The Department hereby agrees to this implementation plan and has caused this instrument to be executed on its behalf this \_\_\_\_ day \_\_\_\_\_, 2015.

State of Wisconsin  
Department of Natural Resources  
For the Secretary

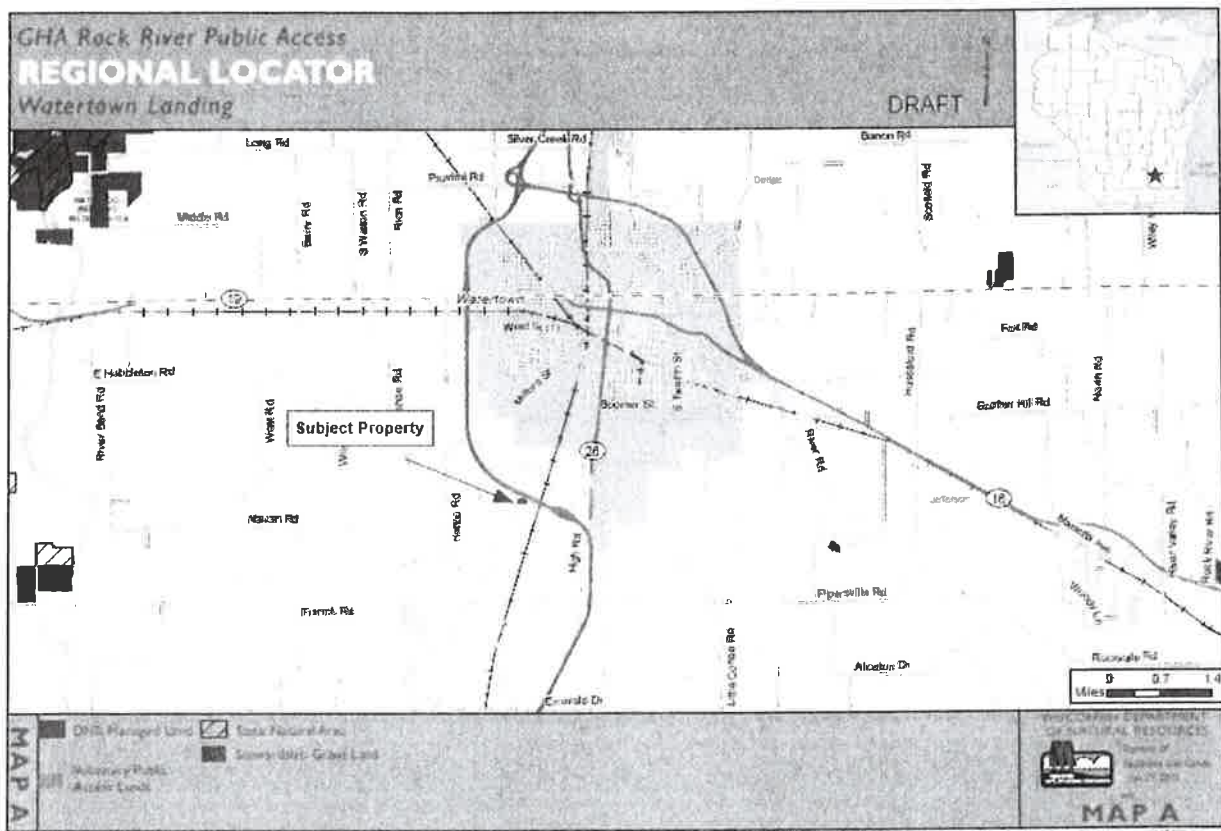
By \_\_\_\_\_

The County hereby agrees to this implementation plan and has caused this instrument to be executed on its behalf this \_\_\_\_ day \_\_\_\_\_, 2015.

Jefferson County  
County Board Chair

By \_\_\_\_\_





This map is a draft and is not for use in any legal proceeding. It is intended for informational purposes only. The Department of Natural Resources does not warrant the accuracy of the information shown on this map. The Department of Natural Resources is not responsible for any errors or omissions on this map. The Department of Natural Resources is not responsible for any damages or losses resulting from the use of this map. The Department of Natural Resources is not responsible for any claims or liabilities arising from the use of this map. The Department of Natural Resources is not responsible for any claims or liabilities arising from the use of this map.



## Approve County Conservation Aids Grant application

Executive Summary

The Wisconsin Department of Natural Resources Fish and Wildlife Management Grant Program was created to assist counties in the improvement of fish and wildlife resources. The fund was established by the Wisconsin Legislature in 1965 and provides matching money for a growing list of county sponsored fish and wildlife habitat projects.

The Jefferson County Parks Department is applying for financial assistance to remove invasive plants at the Garman Nature Preserve, Waterloo, Wisconsin. This year's project will focus on restoration around the entrance to the Garman Nature Preserve by removing invasive and non-native woody vegetation in order to promote the growth of native grasses and forbes. Target species will include removal of buckthorns, honeysuckle, and euonymous alatus (burning bush). Other target species for removal will include garlic mustard, dames rocket and Virginia creeper. The 2015-16 allocations for County Conservation Aid (CCA) for the South Central Region have been set by the Wisconsin DNR. This year the allotment for Jefferson County is \$1,560.00. State statute 23.09 (12), authorizes grants of matching funds to counties for projects focused on long-term fish and wildlife resources.

WHEREAS, the State of Wisconsin enacted legislation providing for allocation of funds to the respective counties on an acreage basis for county fish and game projects on the condition that the counties match the state allocation, and

WHEREAS, Jefferson County desires to participate in county fish and game projects pursuant to the provisions of s. 23.09(12) of the Wisconsin Statutes.

NOW, THEREFORE, BE IT RESOLVED by the Jefferson County Board of Supervisors, that the Board is hereby authorized to expend the funds appropriated and the funds to be received from the State of Wisconsin for the improvement of fish and wildlife habitat, and to operate and maintain or to cause to be operated and maintained the projects for their intended purpose, and

BE IT FURTHER RESOLVED that the Jefferson County Board of Supervisors authorizes the Parks Director to act on behalf of Jefferson County to submit a state grant application to the Wisconsin Department of Natural Resources (DNR) for financial aid for county fish and game projects, sign documents, and take necessary action to undertake, direct and complete the approved projects, and

BE IT FURTHER RESOLVED that the Jefferson County Board of Supervisors does hereby appropriate a matching allocation for such project and such appropriations shall continue as long as state matching aids are available, or until this resolution is modified by this Board.

*Fiscal Note: The County's 2015 state allocation is \$1,560. Should additional funds become available, Jefferson County Parks will attempt to secure them. The County's match is for account labor to do the project.*

Requested by Parks Committee

Joe Nehmer: 09-10-15; J. Blair Ward: 10-01-15

REVIEWED: Administrator           ; Corp. Counsel           ; Finance Director           

10-13-15

**RESOLUTION NO. 2015-\_\_\_\_\_**

**Accepting monetary donation of \$42,000 for the purchase of a parcel of property to expand  
the Garman Nature Preserve in Waterloo**

Executive Summary

In 2003, Mrs. Theo Garman donated to Jefferson County 40 wooded acres of land located in Jefferson County, City of Waterloo, in memory of her late husband, Dr. J. S. Garman. This land has been designated as the Dr. J. S. Garman Nature Preserve. Mrs. Garman continues to support this preserve with cash donations totaling \$55,000 to date and has been a driving force in keeping it a sacred place where anyone can enjoy nature and show respect for Native American culture by experiencing the 22 Indian mounds located on the property. In her efforts to continue her support of this preserve, Mrs. Garman has offered to donate \$28,000 toward the cost of purchasing a 5.7 acre parcel of land offered for sale at \$56,000, which adjoins the nature preserve. In addition, Charles and Joni Crave have offered to donate \$14,000 toward the cost of purchasing this 5.7 acre parcel. The remaining portion of the purchase price, \$14,000, will be paid for by Jefferson County through a 3 year interest free loan from Charles and Joni Crave, subject to potential reimbursement by the State. This resolution seeks County Board authorization to accept \$42,000 in donations and enter into a 3 year interest free loan in the amount of \$14,000, as well as authorization to purchase 5.7 acres of land which adjoins the Garman Nature Preserve.

---

WHEREAS, in 2003, Mrs. Theo Garman donated to Jefferson County 40 wooded acres of land located in Jefferson County, City of Waterloo, in memory of her late husband, Dr. J. S. Garman which has been designated as the Dr. J. S. Garman Nature Preserve, and

WHEREAS, Mrs. Garman continues to support this preserve and has been a driving force in keeping it a sacred place where anyone can enjoy nature and show respect for Native American culture by experiencing the 22 Indian mounds located on the property, and

WHEREAS, Mrs. Garman has offered to donate \$28,000 toward the cost of purchasing a 5.7 acre parcel of land offered for sale at \$56,000, which adjoins the nature preserve, and

WHEREAS, Charles and Joni Crave have offered to donate \$14,000 toward the cost of purchasing this 5.7 acre parcel, and

WHEREAS, the remaining portion of the purchase price, \$14,000, will be paid for by Jefferson County through a 3 year interest free loan from Charles and Joni Crave, subject to potential reimbursement by the State of Wisconsin, and

WHEREAS, the Parks Committee recommends accepting these donations and increasing the size of the Dr. J. S. Garman Nature Preserve by purchasing this 5.7 acre parcel.

NOW, THEREFORE, BE IT RESOLVED that the donations to Jefferson County in the amounts of \$28,000 and \$14,000 for the purchase of a 5.7 acre parcel of property for the purpose of expanding the Dr. J. S. Garman Nature Preserve is hereby accepted;

BE IT FURTHER RESOLVED that the remaining portion of the purchase price, \$14,000, be paid for by Jefferson County through an interest free loan for up to 3 years from Charles and Joni Crave, with the option to pay off sooner as directed by the County Administrator, subject to potential reimbursement by the State of Wisconsin.

BE IT FURTHER RESOLVED that the Jefferson County Administrator is hereby authorized to purchase 5.7 acres of land in the City of Waterloo, Jefferson County, for the purpose of expanding the Dr. J. S. Garman Nature Preserve.

*Fiscal Note: Funding for the County's portion of this purchase will be from tax levy funds allocated in future year's budgets. There will be no tax levy funds expended if the County is reimbursed by the State of Wisconsin or if funds are obtained through fundraising efforts. This is a budget amendment. County Board approval requires a two-thirds vote of the entire membership (20 votes of the 30 member County Board). The donations in the amount of \$42,000 will be placed in a donation restricted account. The loan in the amount of \$14,000 will be designated as a short term loan unless funds become available sooner to pay off the loan as determined by the County Administrator. Capital expenditures for land will total \$56,000. Any grants or donations designated for this land purchase will be used to pay off the short term loan or be deposited in the general fund.*

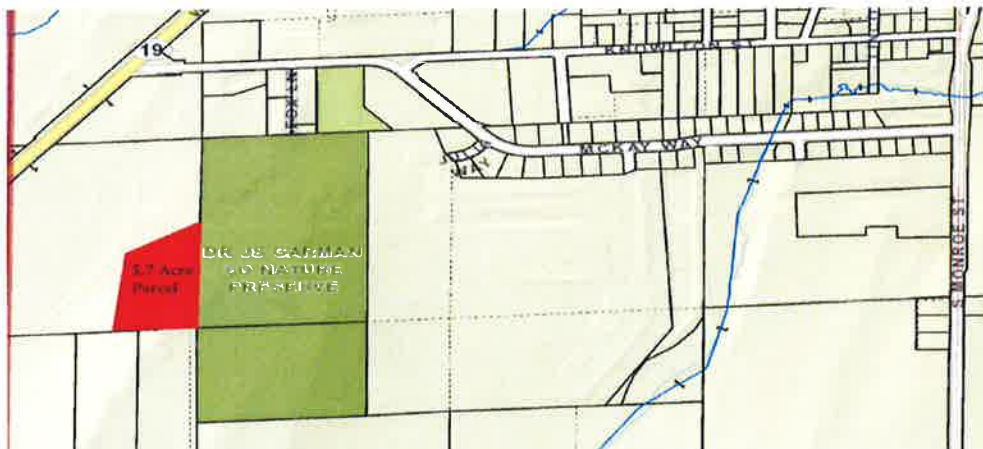
Ayes \_\_\_\_\_ Noes \_\_\_\_\_ Abstain \_\_\_\_\_ Absent \_\_\_\_\_ Vacant \_\_\_\_\_

Requested by  
Parks Committee & Finance Committee

10-13-15

J. Blair Ward: 10-06-15; Joe Nehmer: 10-07-15; Brian Lamers & J. Blair Ward: 10-08-15

REVIEWED: Administrator \_\_\_\_\_; Corp. Counsel \_\_\_\_\_; Finance Director BL



## RESOLUTION NO. 2015-\_\_\_\_\_

**Accepting bid for construction of the Dorothy Carnes Park East Trailhead Parking Lot**Executive Summary

The Jefferson County Parks Department solicited bids for the construction of the Dorothy Carnes Park East Trailhead Parking Lot. The work for which the bids were solicited includes construction of a 36 car parking lot and space to park 2 buses and entrance drive at Dorothy Carnes County Park, W6509 Jones Lane, Fort Atkinson, WI 53538. The project will include installation of erosion control structures, grading, placement of structural fill, paving, painting parking lines and walkways, and final grading of the site. The highest bid was \$ 196,977.30 and the lowest bid was \$ 126,483.20. The Parks Committee has recommended accepting the lowest bid.

WHEREAS, Dorothy Carnes County Park is a valuable recreational resource to Jefferson County, and

WHEREAS, constructing a parking lot at Dorothy Carnes County Park will increase accessibility for park users and reduce street parking, and

WHEREAS, the parking lot will include installation of erosion control structures, grading, placement of structural fill, paving, painting parking lines and walkways, and final grading of the site, and

WHEREAS, the following bids were received:

Wolf Paving	\$126,483.20
Forest Landscaping & Construction, Inc.	\$131,765.00
Payne & Dolan, Inc.	\$142,781.80
Corporate Contractors, Inc.	\$157,758.00
Valia Excavating LLC	\$167,736.70
Poblocki Paving Corp.	\$196,977.30

AND WHEREAS, this project will be funded using 50% Stewardship Grant funds and 50% tax levy funds, and

WHEREAS, the Parks Committee reviewed all bids and recommends awarding the bid to the lowest bidder, Wolf Paving of Madison, Wisconsin.

NOW, THEREFORE, BE IT RESOLVED that the County Administrator is authorized to execute a contract for the Dorothy Carnes Park East Trailhead Parking Lot with Wolf Paving in an amount not to exceed \$126,483.20.

*Fiscal Note: The construction costs for this project will be funded using 50% Stewardship Grant funds in the amount of \$63,241.60 and 50% tax levy funds in the amount of \$63,241.60. The County's portion of construction costs are available in the 2015 Parks Department budget.*

Ayes\_\_\_\_\_ Noes\_\_\_\_\_ Abstain\_\_\_\_\_ Absent\_\_\_\_\_ Vacant\_\_\_\_\_

Requested by Parks Committee

10-13-15

J. Blair Ward: 10-06-15; Joe Nehmer: 10-07-15

REVIEWED: Administrator JBW; Corp. Counsel JBW; Finance Director JBW

**REPORT  
TO THE HONORABLE MEMBERS OF THE JEFFERSON COUNTY  
BOARD OF SUPERVISORS**

The Jefferson County Planning and Zoning Committee, having considered petitions to amend the official zoning map of Jefferson County, filed for public hearing held on September 17, 2015, as required by law pursuant to Wisconsin Statutes, notice thereof having been given, and being duly advised of the wishes of the town boards and persons in the areas affected, hereby makes the following recommendations:

**APPROVAL OF PETITIONS R3825A-15, R3826A-15, R3827A-15,  
R3828A-15, R3831A-15, R3832A-15, R3815A-15, R3835A-15, R3836A-15,  
R3837A-15, R3838A-15, R3839A-15, R3840A-15 AND R3841A-15**

**DATED THIS TWENTY-EIGHTH DAY OF SEPTEMBER 2015**

**Donald Reese, Secretary**

**Note: Petition R3829A-15 will be acted upon on October 27, 2015.**

**THE PRIOR MONTH'S AMENDMENTS R3818A-15, R3819A-15, R3820A-15, R3823A-  
15 AND R3824A-15 ARE EFFECTIVE UPON PASSAGE BY COUNTY BOARD,  
SUBJECT TO WIS. STATS. 59.69(5).**



**ORDINANCE NO. 2015- \_\_\_\_\_****Amended Zoning Ordinance**

WHEREAS, the Jefferson County Board of Supervisors has heretofore been petitioned to amend the official zoning map of Jefferson County, and

WHEREAS, Petitions R3825A-15, R3826A-15, R3827A-15, R3828A-15, R3831A-15, R3832A-15, R3815A-15, R3835A-15, R3836A-15, R3837A-15, R3838A-15, R3839A-15, R3840A-15 and R3841A-15 were referred to the Jefferson County Planning and Zoning Committee for public hearing on September 17, 2015, and

WHEREAS, the proposed amendments have been given due consideration by the Board of Supervisors in open session,

NOW, THEREFORE, BE IT ORDAINED that the Jefferson County Board of Supervisors does amend the official zoning map of Jefferson County as follows:

**FROM BUSINESS TO A-2, AGRICULTURAL AND RURAL BUSINESS; A-3, AGRICULTURAL/RURAL RESIDENTIAL; AND N, NATURAL RESOURCE**

Create a 5.51-acre A-2 lot for residential-type storage; create a 2.37-acre A-3 lot around the home at **W1412 County Highway E** and a 5.08-acre A-3 lot around the home at **W1442 County Road E**; create a 19-acre Natural Resource zone adjacent. This proposal is on PIN 024-0516-1541-000 (32.47 acres), Town of Palmyra. Approval is conditioned upon receipt and recording of a final certified survey map for the lots including extraterritorial plat review, if necessary. The A-2 zone shall be for personal, accessory residential storage only; no outside storage is allowed. The Natural Resource zone shall be kept with the adjacent zone unless road access is granted for it. R3825A-15, R3826A-15 & R3827A-15 – James Omdoll Trust

**FROM A-1 EXCLUSIVE AGRICULTURAL TO A-2, AGRICULTURAL AND RURAL BUSINESS**

Rezone PIN 012-0816-2222-002 (5.76 acres) with conditional use for mini-warehousing at **N8466 North Road** in the Town of Ixonia. This is conditioned upon Department of Transportation approval for the change in use of the existing access. The existing private onsite waste treatment system shall be abandoned and reviewed by the Zoning Department. R3828A-15 - Raymond & Janet Ross/Edgar Grosenick property

Create an A-2 zone with two lots, one of 5.3 acres with conditional use for beekeeping supply sales and storage **south of East Gate Drive**, and one of 4.59 acres at **W2763 East Gate Drive** with conditional use for farm equipment and construction equipment sales. The site is on PIN 032-0815-1231-000 (37.14 acres) in the Town of Watertown. Rezoning is conditioned upon road access approval; lot four must have frontage and access on a public road in order to be sold separately, or a variance must be granted in order for access and frontage to not be necessary.

Further, it is conditioned upon approval and recording of a final certified survey map, including extraterritorial plat review if necessary. R3831A-15 – JTO Properties, LLC

**FROM A-1, EXCLUSIVE AGRICULTURAL TO A-3,  
AGRICULTURAL/RURAL RESIDENTIAL**

Create a 2-acre building site on **County Road N** from part of PIN 004-0515-1924-001 (14.036 acres) in the Town of Cold Spring. This prime ag land lot is being allowed at two acres due to a history of non-cultivation, and uses the last available lot for the property. Approval is therefore conditioned upon recording of an affidavit acknowledging that fact. It is further conditioned upon road access approval, receipt of a suitable soil test and approval and recording of a final certified survey map, including extraterritorial plat review if necessary. R3832A-15 – Steven & Theresa Schluter

Create a 3-acre farm consolidation lot around the home and buildings at **N7054 County Road D** in the Town of Farmington from part of 008-0715-0241-000 (37.99 acres). This action is conditioned upon road access approval for the remaining A-1 zoned land and upon approval and recording of a final certified survey map for the lot with a minimum 20-foot setback to any building. R3815A-15 – Eldyn Pitzner

Rezone 2 acres of PIN 012-0816-0324-000 (43.156 acres) to create a new building site near **W1161 County Road CW** in the Town of Ixonia. This is conditioned upon road access approval, receipt of a suitable soil test and approval and recording of a final certified survey for the lot. R3835A-15 – David Mallow

Create a 3-acre farm consolidation lot at **N5207 Pioneer Drive** in the Town of Concord from part of PINs 006-0716-3212-001 (20 acres) and 006-0716-3213-000 (40 acres). Approval is conditioned upon road access to the remaining A-1 zoned land and approval and recording of the final certified survey map, including extraterritorial plat review if necessary. R3836A-15 – Thomas Anfang

Rezone to create four, 2-acre building sites utilizing consolidation of Parcels of Record, transferring two lots from 006-0716-3212-001 (20 acres) and 006-0716-3213-000 (40 acres) to 006-0716-3211-001 (20 acres) and creating two lots from PINs 006-0716-3211-001 and 006-0716-3214-000 (40 acres). The site is on **Pioneer Drive** in the Town of Concord. This utilizes the last available A-3 lots for the property, and therefore this action is conditioned upon recording of an affidavit acknowledging that fact. It is further conditioned upon road access approval, receipt of a suitable soil test for each lot and approval and recording of a final certified survey map, including extraterritorial plat review if necessary. R3837A-15 – Thomas Anfang

**FROM A-1, EXCLUSIVE AGRICULTURAL TO A-3, AGRICULTURAL/RURAL  
RESIDENTIAL AND NATURAL RESOURCE**

Create a 6-acre building site on **Rocky Lane** and a 10.7-acre Natural Resource zone from PIN 006-0716-3214-000 (40 acres) in the Town of Concord. This utilizes the last available A-3 zone for the property; therefore, rezoning is conditioned upon recording of an affidavit acknowledging that fact. It is further conditioned upon road access approval, receipt of a suitable soil test and

approval and recording of a final certified survey map, including extraterritorial plat review if necessary. R3838A-15 & R3839-15 – Thomas Anfang

**FROM A-1, EXCLUSIVE AGRICULTURAL TO N, NATURAL RESOURCE**

Create a 7.4-acre Natural Resource zone on **Lake Dorothy Lane** from PIN 008-0715-1422-000 (29.343 acres) in the Town of Farmington. Approval is conditioned upon approval and recording of a final certified survey map or deed transfer document. Road access approval will only be required if this is to be sold separately from adjoining lands. R3840A-15 – Gina Salmieri/Ione Kerr property

**FROM A-1, EXCLUSIVE AGRICULTURAL AND COMMUNITY TO A-3,  
AGRICULTURAL/RURAL RESIDENTIAL**

Rezone 1.85 acres of PIN 018-0713-3032-000 (28.2 acres) to create a lot around the buildings at **N5480 County Road O** in the Town of Lake Mills. This is conditioned upon approval and recording of a final certified survey map. All structures must be a minimum of 20 feet from the proposed lot lines. R3841A-15 – Jon W. Febock

The above rezonings shall be null and void and of no effect one year from the date of County Board approval unless all applicable conditions have been completed by that date.

Ayes \_\_\_\_\_ Noes \_\_\_\_\_ Abstain \_\_\_\_\_ Absent \_\_\_\_\_ Vacant \_\_\_\_\_

Requested by  
Planning & Zoning Committee

10-13-15

Deb Magritz: 10-06-15

REVIEWED: Administrator *SLW*; Corp. Counsel *JBW*; Finance Director *BC*

## Item 18a-d

TO THE JEFFERSON COUNTY BOARD OF SUPERVISORS:  
MEMBERS OF THE BOARD:

By virtue of the authority vested in the County Administrator under Sections 59.18 of the Wisconsin Statutes, I do hereby request the County Board's confirmation of the following appointments:

- a. Jim Mode, Jefferson, WI to the Human Services Board for a three-year term ending November 1, 2018.

AYES \_\_\_\_\_ NOES \_\_\_\_\_ ABSTAIN \_\_\_\_\_ ABSENT \_\_\_\_\_

- b. James Schultz, Watertown, WI to the Human Services Board for a three-year term ending November 1, 2018.

AYES \_\_\_\_\_ NOES \_\_\_\_\_ ABSTAIN \_\_\_\_\_ ABSENT \_\_\_\_\_

- c. Leigh Froelich, Sullivan, WI, to the Jefferson County Library Board for a three-year term ending term ending December 31, 2018.

AYES \_\_\_\_\_ NOES \_\_\_\_\_ ABSTAIN \_\_\_\_\_ ABSENT \_\_\_\_\_

- d. Nancy Lust, Cambridge, WI to the Jefferson County Library Board for a three-year term ending December 31, 2018.

AYES \_\_\_\_\_ NOES \_\_\_\_\_ ABSTAIN \_\_\_\_\_ ABSENT \_\_\_\_\_

RESOLUTION NO. 2015-\_\_\_\_\_

**Accepting bid for backup generator for Lueder Haus**

Executive Summary

Lueder Haus serves Jefferson County as an acute care facility for chronic mentally ill adults who are in immediate crisis, but not in need of hospitalization. Established in 1980, the on-going purpose of Lueder Haus is to keep adults, challenged by mental illness, within the community and to minimize or prevent psychiatric hospitalizations whenever possible. In order to ensure continuous service to residents of Lueder Haus, the Jefferson County Infrastructure Committee has made the recommendation to install a backup generator. Power outages have been an ongoing concern for staff of Lueder Haus and present unique challenges when they occur due to the special needs of Lueder Haus residents. Installing an emergency backup generator will allow the residents of Lueder Haus to remain in the facility during power outages without disruption of their established treatment program. The highest bid for a backup generator was \$78,820 and the lowest bid was \$39,950. The infrastructure Committee has recommended accepting the lowest bid.

WHEREAS, Lueder Haus serves Jefferson County as an acute care facility for chronic mentally ill adults who are in immediate crisis, but not in need of hospitalization, and

WHEREAS, power outages have been an ongoing concern for staff of Lueder Haus and present unique challenges when they occur due to the special needs of Lueder Haus residents, and

WHEREAS, installing a backup generator will allow the residents of Lueder Haus to remain in the facility during power outages without disruption of their established treatment program, and

WHEREAS, the following bids were received:

Pro Electric, Franksville, WI	\$78,820
Hogen Electric, Hartford, WI	\$53,500 and \$46,200
KW Electric, Plymouth, WI	\$46,200
Ready Electric, Fort Atkinson, WI	\$39,950

AND WHEREAS, the Infrastructure Committee has reviewed all bids and is recommending accepting the lowest bid from Ready Electric from Fort Atkinson, Wisconsin, in the amount of \$39,950.

NOW, THEREFORE, BE IT RESOLVED that the County Administrator is authorized to execute a contract for a backup generator with Ready Electric from Fort Atkinson, Wisconsin, in an amount not to exceed \$39,950.

*Fiscal Note: The project funding is included in the 2015 Human Services budget.*

Ayes \_\_\_\_\_ Noes \_\_\_\_\_ Abstain \_\_\_\_\_ Absent \_\_\_\_\_ Vacant \_\_\_\_\_

Requested by Infrastructure Committee

J. Blair Ward/Brian Lamers: 10-09-15 REVIEWED: Administrator \_\_\_\_\_; Corp. Counsel DTW, Finance Director \_\_\_\_\_

10-13-15